

# CASE STUDY

Linwood Elementary  
Linwood, KS



Project Summary	
Building type	School
Contractor	Temp-Con, Inc.
Building structure	Steel Beams
Services	HVAC Ductwork, Refrigeration Piping

Featured Products		
UniGrip	Universal Bracket	Duct Trapeze



*“We’ve used a different cable system in the past and Gripple saves more time and is easier to adjust than other systems. We really saved on the piping side by not having to cut rod and messing with all of that, huge savings” - Danny Todd, General Superintendent*

## ..... COST SAVING SUMMARY .....

	Gripple solution	Traditional method
Overview	UniGrip/Universal Bracket/Duct Trapeze/GCS Clamp/Butterfly Trapeze/Express Hanger	Threaded Rod & Strut
Installation time	533 hours	1,316 hours



## CASE STUDY

Linwood Elementary  
Linwood, KS



### PROJECT DETAILS

For this project the HVAC contractor, Temp-Con Inc, was tasked with installing HVAC Ductwork, Refrigeration Piping, and Ceiling Cassettes at an elementary school in Linwood Elementary in Kansas.

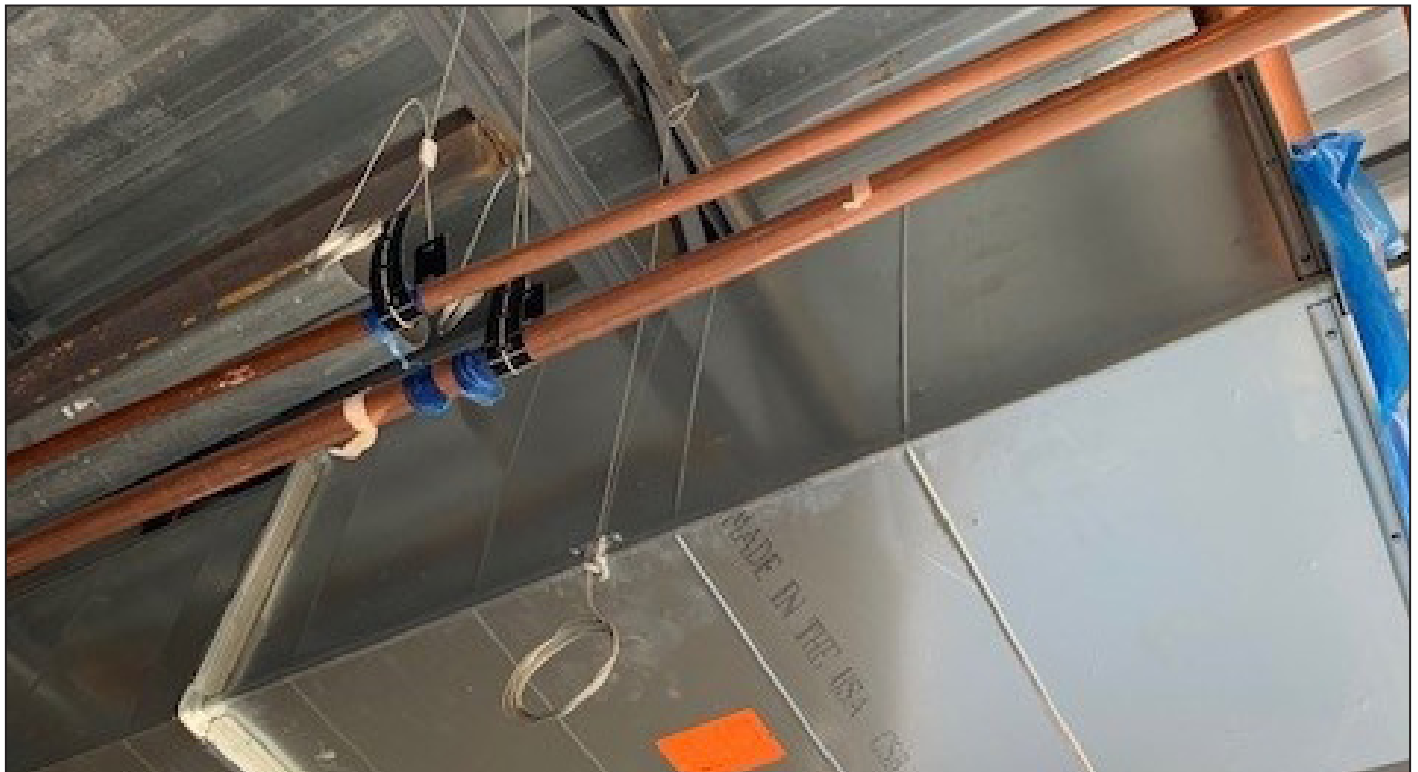
Prior to this project the contractor had no previous experience using GripplE products and had been using a competitor product. Temp-Con's project managers were introduced to GripplE at a contractor event and decided to give the products a try.

To start off the project the contractor utilized GripplE's take-off service. This included pricing,

estimates, product information sheets, technical drawings and a labor savings breakdown.

Once they started using GripplE products, they found that GripplE eliminated the need for cutting threaded rod and strut and made the installation time 33% faster.

*"The Take-Off process was so easy. Plans easy to read, everything was packaged all together, we didn't have to go pick up additional hangers. When we made a change in one area with cable lengths Kevin helped correct that quickly. One of the best processes we have used" - Danny Todd, General Superintendent*



[WWW.GRIPPLE.COM](http://WWW.GRIPPLE.COM)