

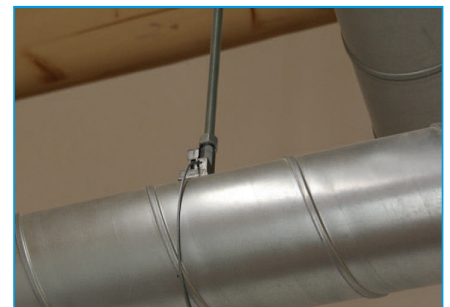
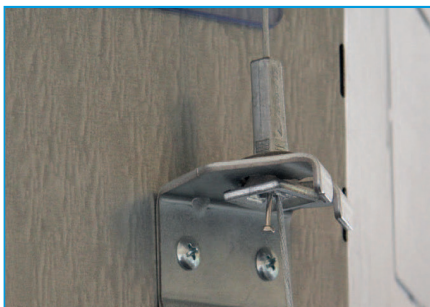
Case Study

The Alconbury Weald Club Building, Cambridgeshire

The Alconbury Weald Club Building is situated on the Alconbury Enterprise Campus which lies at the heart of the high quality low carbon development of Alconbury Weald. It offers flexible, bespoke business space for businesses from 250 to over 500,000 sq ft (12 – 46,450 sq m). The Government-backed Enterprise Zone is supported by a team of partners locally, regionally, nationally and internationally. Aesthetics and time were key drivers for Ambivent Mechanical Services Ltd in their decision to select Grippple suspension systems for this project.

Building Type	Commercial
Location	Alconbury Weald, Cambridgeshire
Contractor	Ambivent Mechanical Services Ltd
Services	Full HVAC Services
Products	Duct Trapeze, Trapeze No.3, Standard Hanger and Barrel End Fixing

Grippple and Ambivent have worked together on numerous projects previously. Ambivent have used Grippple's extensive free technical services such as co-ordination drawings reviews, pull tests and on-site training, on this occasion they requested a Sustainability Report from Grippple. The report detailed the potential reduction in embodied carbon if Grippple products were used instead of traditional methods such as threaded rod. The duct work was suspended using the purpose-made Duct Trapeze, which eliminates the need for channel support, and spreads the loads over three fixing points. The Duct Trapeze has a load rating of up to 45 kg, with a 5:1 safety factor. Using the Duct Trapeze as opposed



to threaded rod and channel for this site reduced the weight by 95%. The client requested confirmation of the strength of the anchor and substrate. Grippple's technical team conducted an on-site pull test and produced a full pull test report for Ambivent to submit to the client.

"Grippple's solutions helped us to reduce install times, which was particularly important given the challenging programme. By using Grippple we also reduced embodied carbon by 98%. We were given a detailed quotation enabling us to budget and estimate for this project during the tender stage, and to ensure we had no annoying shortages or costly and potentially wasteful oversupply. The Grippple technical team were on hand to visit site to train our installers and provide on-site testing. The team visited site several times and supplied detailed pull test and installation reports to ensure all the services were suspended safely. As always we look forward to working with Grippple on future projects."

Mahul Patel, Contracts Director at Ambivent Mechanical Services Ltd.