

Case Study

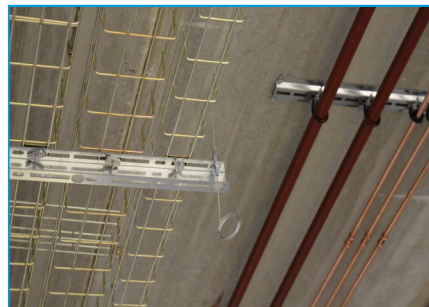
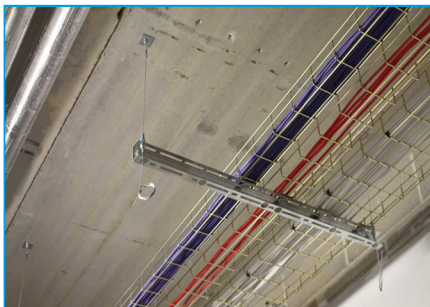
Hampstead School, London

Hampstead School received investment under the government led Priority Schools Building Programme (PSBP), which was launched to help address the needs in the worst condition schools. The Education Funding Agency (EFA), which is the delivery arm of the DfE, is managing the programme. Hampstead School will benefit from refurbishment and re-organisation of a number of existing buildings along with a brand new building.

Wates Construction have developed a way to implement projects that integrate across all areas of the supply chain. This

Building Type	Education
Location	London
Contractor	Main: Wates Mechanical & Electrical Installation: Industrial Power Solutions (IPS) and ACM
Services	Mechanical and Electrical
Products	Trapeze Plus, Standard Hanger, Y-Fit Accessory, QT Compact Clamp, Low Profile Bracket, Gripple Universal Clamp, Gripple Universal Channel

process encompasses design, estimation, delivery and commissioning, giving Wates Construction the ability to self-deliver projects in the same way as a traditional M&E subcontractor. The Gripple products utilised on the Hampstead School project were sourced by Wates Construction, but installed by approved sub-contractors Industrial Power Solutions (IPS) and ACM.



The Gripple Universal Channel and Trapeze Plus provide a quick pre-fabricated alternative to threaded rod and slotted channel, which require “hot works”, cutting and filing on-site. The Trapeze Plus can be pre-installed onto the channel and features an easy-to-use integral release button for finite adjustment. The locking screw can also be tightened for ultimate security.

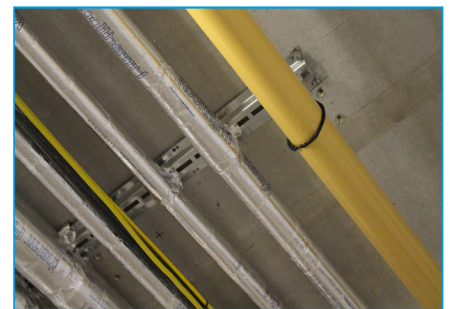
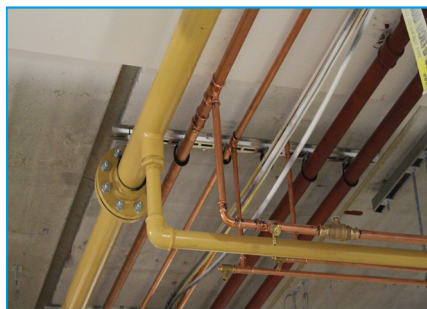
“Gripple had a positive effect on the program reducing the initial schedule, and helped us work towards achieving our BREEAM Excellent rating.”

MEP Project Manager, Wates

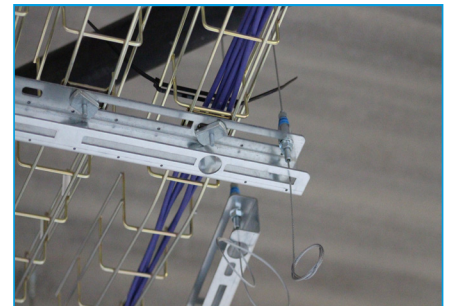
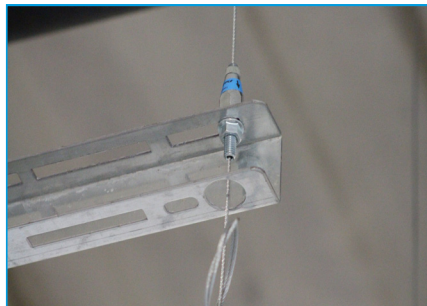
Case Study

Hampstead School, London

Wates Construction opted to use the new Low Profile Brackets and QT Compact Clamps to suspend the majority of pipework. The Low Profile Bracket is ideal when pipework has to be mounted close to the soffit or wall. The QT Compact Clamp replaces 11 different pipe sizes and can be fitted to the Low Profile Bracket via a tool-less quarter turn attachment. Using the GripplE solution allowed for the pipework to be fitted less than 35 mm from the soffit and took 50% less time to install compared to traditional brackets and clamps.



The embodied carbon was reduced by 98%. Over 1.3 tonnes when compared to threaded rod. Saving the equivalent of a seat on a return flight from London to Beijing.



"This was our first installation of Electrical containment on GripplE, our primary concern was rigidity. As the install progressed we soon identified how and where the system achieves its rigidity. We were able to significantly improve our install times vs traditional materials and found the system easy to use. Not having to cut any rod our Uni strut on site made a significant difference to material handling and storage on site."

IPS, Site Manager

"Wates Construction are always looking for new and innovative products to enhance our projects. GripplE solutions reduce the installation time on site and improve health and safety by reducing the time spent working at height. As a company we are committed to protecting the environment and look for ways to limit our future environmental impact. GripplE's products dramatically reduce the embodied carbon of the materials used for suspending services, helping Wates Construction with our commitment to source materials responsibly. We look forward to working with GripplE in the future."

Wates