

Case Study

Hazel Court, Sketty Park, Swansea

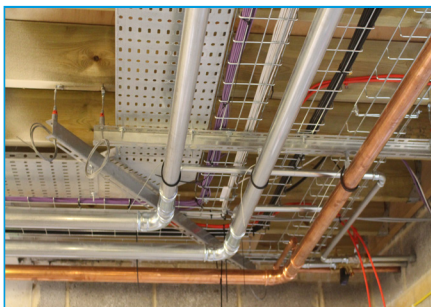
Hazel Court, in Sketty Park, Swansea, offers an award winning Extra Care scheme for the over 55s. When originally built it was the first of its kind in Wales, offering 120 spacious apartments' as well as an on-site gym, hair salon and restaurant. The new extension will host 43 new apartments, bringing the total number of homes at Hazel Court to 163.

JW Morris have used GripplE products previously, for this project they have utilised GripplE's QT Universal Clamp, Trapeze No.3, alongside the Universal Bracket. GripplE supplied the project with time and space saving solutions. The Universal

Building Type	Residential	
Location	Sketty Park, Swansea	
Contractor	Contractor: Kier	Sub-contractor: JW Morris
Services	Pipework & Electrical containment	
Products	Trapeze No.3, Universal Bracket, QT Universal Clamp	

Bracket maximised efficiency in the small ceiling void, with the bracket being coordinated for both M&E services. Arriving to site pre-cut, the Universal Bracket eliminated the need for cutting channel on site - improving health and safety.

During the project JW Morris were delayed access to the build, due to the speed of installation on other building applications. To ensure the build did not fall behind schedule, they saved time by installing the bracketry with the Trapeze No.3, which is a fast and easy mechanism to install with an integral adjustment button allowing for perfect levelling.



JW Morris also benefited from the QT Universal Clamp which is used in conjunction with the GripplE Universal Brackets for quick and easy support of all pipework. The QT Universal Clamp is ten times faster to install than traditional methods, with a quarter turn fixing allowing tool free adjustment and attachment. The QT Universal clamp replaces more than 12 different pipe ring sizes.

"The service and products offered by GripplE were excellent. Easy and quick to install - this was a key driver supporting our decision to use GripplE as we were delayed access to the build, we needed to ensure we did not fall behind schedule. The products we used allowed us to save time and have less guys on the job."

Site Supervisor - JW Morris