

# Case Study

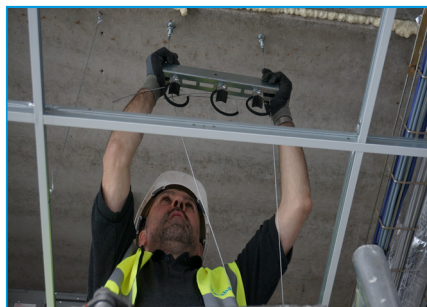
## Oakleigh Road South Vehicle Depot, London

Barnet Council, alongside appointed contractor Willmott Dixon, are developing the former Abbots Depot site to become the new Oakleigh Road South Vehicle depot, London. The depot will allow Barnet Council to operate its waste and recycling collection fleet from a single coordinated site, ensuring the most efficient service for residents across the borough. The site will provide parking facilities for refuse and recycling collection vehicles, vehicle maintenance building and a covered bulking facility allowing recyclables to be put into larger vehicles for processing outside the borough.

<b>Building Type</b>	Commercial
<b>Location</b>	London
<b>Contractor</b>	Willmott Dixon <b>Sub-contractor:</b> Kershaw Mechanical Services Ltd & REL Building Services
<b>Services</b>	Electrical/ Pipework/ Ductwork
<b>Products</b>	QT Trapeze Plus, Universal Pipe Bracket, QT Universal Clamp, Trapeze No.2

Kershaw Mechanical Services have used GripplE products previously, for this project they have utilised GripplE's Quick Twist Universal Clamps, alongside the Universal Brackets to support pipework. GripplE hanging solutions reduced the time spent working at height on site, with the products arriving pre-measured for the contractors' specific requirements. The Universal Clamp replaces more than 11 different pipe clip sizes, and is up to 6 times faster to install than threaded rod and rubber lined clips.

To further reduce installation times, Kershaw Mechanical Services suspended the pipework with the QT Trapeze Plus



which enables channel suspension to become more secure and durable, the easy to use integral adjustment button allows for perfect levelling and the locking screw provides ultimate security. REL Building Services installed electrical applications into the project, using a single drop to basket, so they could save time by side loading cables.

"To ensure we complete the project on time, we decided to use multiple GripplE products on both electrical and pipework applications, for speed and efficiency. "

*Site Supervisor - Kershaws Mechanical Services Ltd*