

CASE STUDY

Waitrose Store
Swindon, UK



TIME SAVINGS
282 HOURS

WORKING WEEKS SAVED*
7 WEEKS

LABOUR SAVED
£5,640

Waitrose chose the small town of Wichelstowe in Swindon to develop a new store, benefiting the emerging community and bringing confidence to the local economy. To support the installation of mechanical services on this store, Grippple supplied [Y-Fit](#), [Universal Bracket](#), [Duct Trapeze](#), [Standard Hanger](#) and [Universal Clamps](#).

Project Summary

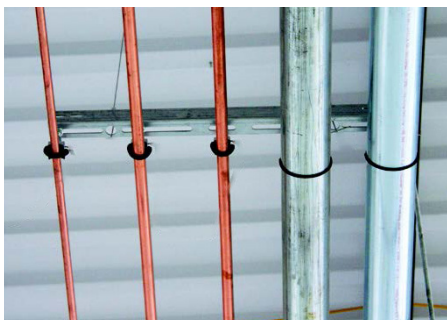
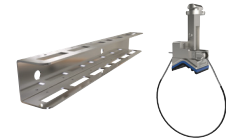
Building type	Retail
Building structure	Steel and concrete with metal decking
Services	Mechanical containment

Featured Products

Standard Hanger
Duct Trapeze



Universal Bracket
Universal Clamp



“The Grippple system is excellent for cleanliness, time saving and safety, so the change from traditional methods to Grippple was an easy choice to make.”

- Site Supervisor -

COST SAVING SUMMARY

	Grippple solution	Traditional method
Overview	Duct Trapeze, Universal Bracket, Universal Clamp, Y-Fit & Standard Hanger	Channel, threaded rod, strut, channel nuts & pipe rings
Material cost	£8,602	£6,127
Installation time	241 hours	523 hours
Labour rate (per hour)	£20	£20
Total labour cost	£4,820	£10,460
Total cost	£13,422	£16,587

*Figure based on one installer working for eight hours a day

WWW.GRIPPLE.COM



PROJECT DETAILS

Waitrose Wichelstowe has a footprint of 39,000 square metres, as well as a 60 seat café and facilities for a winery, bakery and food tasting. Five cold rooms and 67 refrigeration units are supplied by a chilled water system, suspended on Gripplle wire rope suspension solutions. The mechanical contractors for this project opted to use Gripplle products to suspend the HVAC and pipework across the store.

Gripplle Duct Trapeze was used for the fast suspension of rectangular ducting, spreading the load across three fixing points with the pin allowing for rapid, tool-free adjustment. Load rated at 45 kg with a 5:1 safety factor, Duct Trapeze is supplied as a ready-to-use kit with a pre-determined length of wire, which saves time on-site as no preparation of materials is required.

To suspend the pipework, Universal Clamp was used. Suitable for most types of piping, these clamps replace

more than 13 different sizes of traditional pipe rings. The Universal Clamp requires no tools, cutting or filing for installation, which minimises the health and safety risk as less time is spent working at height, sorting and installing various components.

In order to support the spiral ductwork, Standard Hanger was used in conjunction with Gripplle Y-Fit; this provided the ideal support for balanced containment, with the double hanging points improving stability. Gripplle Y-Fit is available with a range of End Fixings, and can be manufactured with a variety of leg lengths. One leg can be easily detached, ideal for applications where access to services is required.

All materials arrived on site pre-assembled and pre-cut which meant no 'hot works' permit was required, drastically improving health and safety on this busy construction site.

