

CASE STUDY

Amazon
Hyderabad,
India



Project Summary	
Building Type	Warehouse
Consultant	C.R. Narayana Rao (Consultants) Pvt Ltd
Main Contractor	KMV Group
MEP Contractor	Air MechEngineers Pvt Ltd / Micron Electricals
Services	HVAC, Electrical and Lighting

Featured Products	
<p>Y-Fit</p>	<p>Standard Hanger</p>

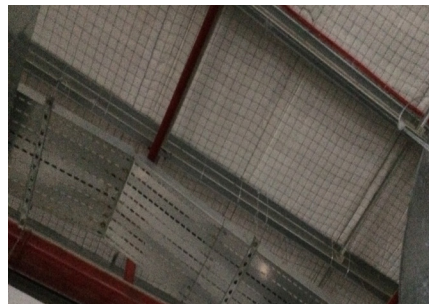
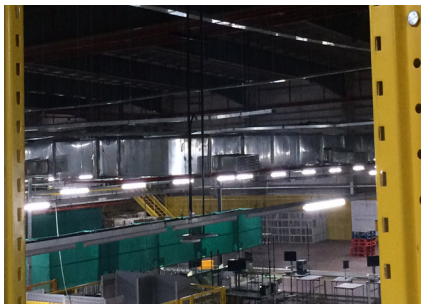
PROJECT DETAILS

US-based e-commerce giant has opened its largest fulfilment centre in India (to date) in Hyderabad. At approximately 400,000 sq.ft the warehouse boasts of 51 loading and unloading docks and has the capacity to handle 1,000 trucks a day.

This was a fast track project with the delivery team required to make the warehouse operational within six months. Gripple was the preferred option after working with Amazon on a number of other fulfilment centres across India.

The project utilised the Standard Hanger No.2 and No.3 and Y-fit to install the HVAC ducts, IT and lighting raceways and power cable trays. By using Gripple hangers across the site the number of man hours were reduced, the kits eliminated the need for welding and drilling of purlins while simultaneously enhancing the aesthetics of the site.

The ease of use and quick installation time was appealing for the project team. For the duct erection it took approximately 20 mins for a single line by a team of 3-4 people. For the small raceways it was approximately 15 mins for a single line by a team of 2-3 people, with 3-4 people required for large size cable trays in the same timeframe. If traditional supports had been used on this project it would have required 4-5 people and would have taken roughly 4 times longer.



“Gripple helped us in meeting our deadlines and the detailed drawings helped in smooth running of work at the site. If you talk about the aesthetics part, the only word to be used is ‘awesome’.”

- ManmadhKumar, Project Manager, Micron Electricals -