

CASE STUDY

Centre Municipal,
St Constant,
Canada



TIME SAVINGS
70 HOURS

WORKING WEEKS SAVED*
1.75 WEEKS

LABOUR SAVINGS
\$4,200

The new Centre Municipal, has an area of approximately 2,550 square meters, and will offer several multifunctional rooms. GripplE supplied it's range of cable hangers to this project with the [Duct Trapeze](#) and [Express hanger](#) been used for the suspension of all ductwork.

Project Summary

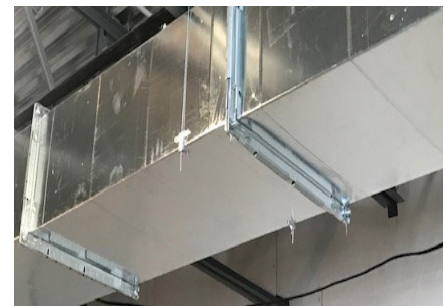
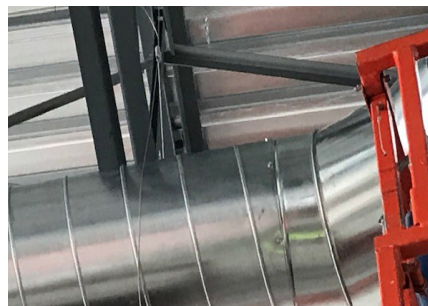
| | |
|---------------------------|------------------|
| Building type | Government |
| Main Contractor | Decarel |
| MEP Contractor | TBC Construction |
| Building structure | Metal Deck |
| Services | HVAC |

Featured Products

Express



Duct Trapeze



"We chose to use GripplE for its [excellent customer service](#). The TM was able to provide us with a [solution and on-site support](#), the TM met all expectations for a 1st time user. Our project benefitted from full solution kits instead of using different accessories, adapters and tools. GripplE was also [easy install](#) no matter what type of structure it was for."

- Pascal Cloutier, Foreman, TBC Construction

COST SAVING SUMMARY

| | GripplE solution | Traditional method |
|------------------------|--------------------------------------|---|
| Overview | Duct Trapeze and No.2 Express | 3000ft of Threaded Rod, Nuts, Anchors, Washers, V-Bracket, Half Moon, Unistrut, Beam Clamps |
| Material cost | \$2,600 | \$3,300 |
| Installation time | 13 hours | 83 hours |
| Labour rate (per hour) | \$60 | \$60 |
| Total labour cost | \$780 | \$4,980 |
| Total cost | \$3,380 | \$8,280 |

*Figure based on one installer working for eight hours a day

WWW.GRIPPLE.COM

GripplE Canada Inc. | 6665 Tomken Road | Units 9 - 10 | Mississauga | ON | L5T 2C4 | Tel +1 905 458 8700 | Email cainfo@gripplE.com



PROJECT DETAILS

The new Centre Municipal, has an area of approximately 2,550 square meters, and will offer several multifunctional rooms which will be used for events, storage and offices for the Recreation Department.

Grippple was chosen by the Contractor for the suspension of round and square ductwork throughout the building. This project was a trial site for first time Grippple user TBC Construction. They had a job to be completed quicker than the given delivery date, without the use of Grippple products TBC Construction wouldn't have been able to complete the project on time.

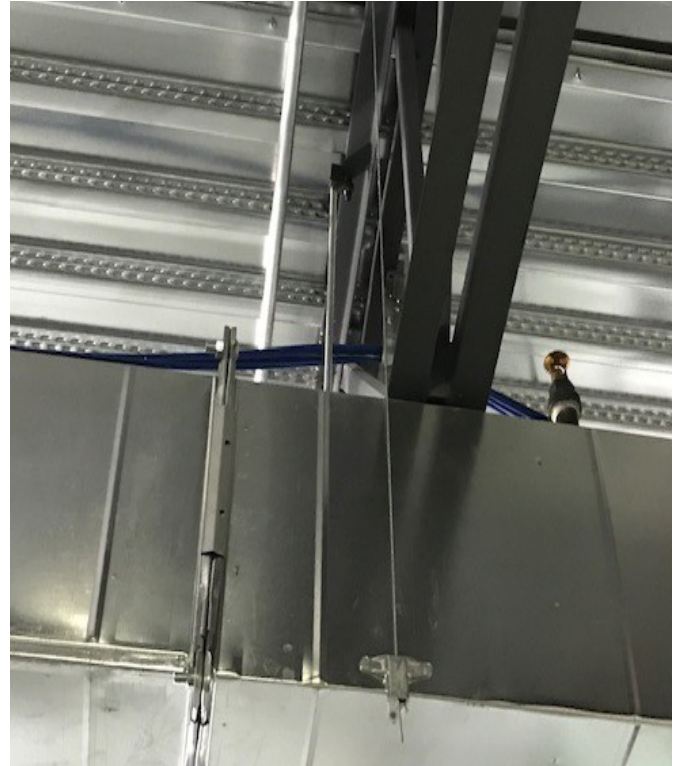
Centre Municipal is the first one of TBC Constructions' projects to benefit from using Grippple products. They took advantage of Grippple's Express hanger and Duct Trapeze. Both products were installed for the fast suspension of

ductwork, also allowing for rapid adjustment as no setting keys were required.

Both products improved health and safety on-site as no tools or 'hot works' permits were required for the installation. The Duct Trapeze and Express hanger are both industry approved and SMACNA verified.

As the contractor swapped from threaded rod to Grippple cable kits, for every foot of Grippple cable specified to replace threaded rod, it is estimated that a saving of 2.7 lbs of embodied CO₂ is realized. This equates to a total embodied CO₂ saving of up to 95% when switching from threaded rod to Grippple cable hangers.

The TBC Construction saved 70 hours in total due the quick installation which equated to an overall saving of \$4,900.



WWW.GRIPPLE.COM

Grippple Canada Inc. | 6665 Tomken Road | Units 9 - 10 | Mississauga | ON | L5T 2C4 | Tel +1 905 458 8700 | Email cainfo@grippple.com