





GripplE's [UniGrip](#), [Express](#) and [Y-Fit](#) hangers were used on this new hospital project for the suspension of conduit racks, basket tray and lighting. The Contractor was looking for a fast way to install the pre-fab conduit rack system.

Project Summary	
Building type	Hospital
MEP Contractor	The Plan Group
Building structure	Concrete
Services	Electrical

Featured Products	
 <p>UniGrip</p>	 <p>Express</p>

This Hospital is a new-build facility with 172 beds and a new radiation vault for cancer treatment. The new hospital will help more patients receive specialized and complex care, closer to home and with shorter wait times.

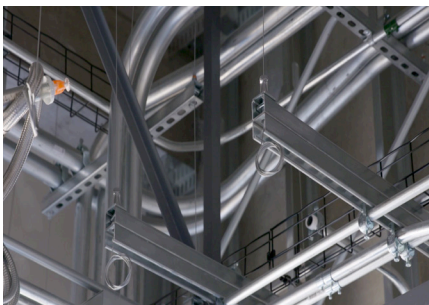
The GripplE UniGrip was used to install conduit racks, basket tray and lighting along the whole wing of the hospital. The UniGrip offers quicker installation than traditional methods as the products are delivered to site ready to use, eliminating the need for cutting and preparing threaded rod. It also means there is less working at height, improving health and safety on site, as some of the pre-fabrication can be done at ground level.

With traditional rod, everything needs to be levelled with the nuts which is fiddly and time consuming, however the UniGrip has an integral ergonomically designed release

button allows for simple adjustment. In one day the Contractor was able to suspend 350 linear feet with 4 installers in one day, which is almost 8000 feet of conduit pipe in total.

GripplE supported the site team through the project from design through to installation, providing training, checking deliveries and on-hand to answer any queries that occurred.

The GripplE solution was also ideal for this project as the hospital is in a remote location. Deliveries could be scheduled to meet the construction timetable, and products were delivered boxed in ready-to-use kits which are easy to store and move around the site.



“GripplE was chosen for this project because of its [uniqueness](#) and [speed](#). It also saves labor which is our driving factor.”

- John Veltri, Electrical Superintendent, The Plan Group -