

CASE STUDY

8601 Dodge Street
Nebraska



TIME SAVINGS

80 hours

TOTAL SAVINGS

\$5,300


The contractor was tasked with an electrical installation in a narrow space. The highlight of the project was the flexibility and efficient use of space of that the Fast Trak system provided versus the traditional method.

Project Summary


Building type	Commercial
Contractor	DNB Electrical
Building structure	Concrete
Services	Electrical

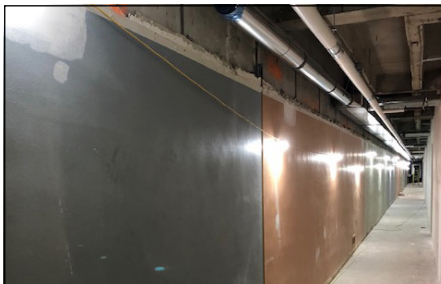
Featured Products

Fast Trak



Fast Trak Brackets





“Over 10 times faster than traditional threaded rod and strut!” - General Contractor

COST SAVING SUMMARY

	GripplE solution	Traditional method
Overview	Fast Trak	3/8 Threaded rod & strut
Material cost	\$2,700	\$2,000
Installation time	80 hours	160 hours
Labor rate (per hour)	\$75/hour	\$75/hour
Total labor cost	\$6,000	\$12,000
TOTAL COST	\$8,700	\$14,000



CASE STUDY

8601 Dodge Street
Nebraska



PROJECT DETAILS

The contractor, DNB Electrical, was tasked with installing 3 1/2" conduit runs in a very narrow 4-story 1960s building that was 1/4 mile long and 70 feet wide with 800 linear feet hallways. The remodeling process resulted in a "battle of the trades" to find room in the minimal ceiling space to fit all of the necessary suspended services.

The challenge of small spaces made the GripplE Fast Trak system the perfect solution for suspending conduit. The Fast Trak system

offered the speed, flexibility, and efficient use of space that the contractor needed.

Prior to this job, the contractor had no experience with GripplE products. They found that not only were the products easy to install but also very advantageous when it came to labor savings. The Fast Trak system was a quicker alternative than installing with threaded rod and clamps, cutting installation time down in half.



WWW.GRIPPLE.COM