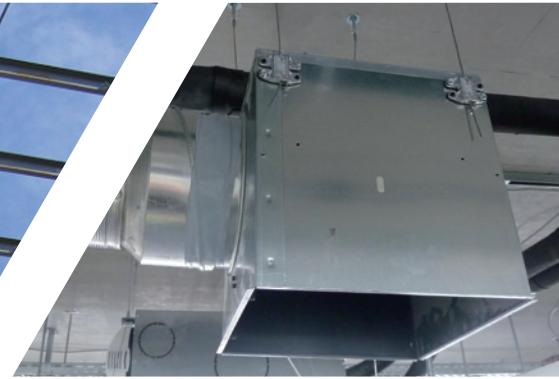


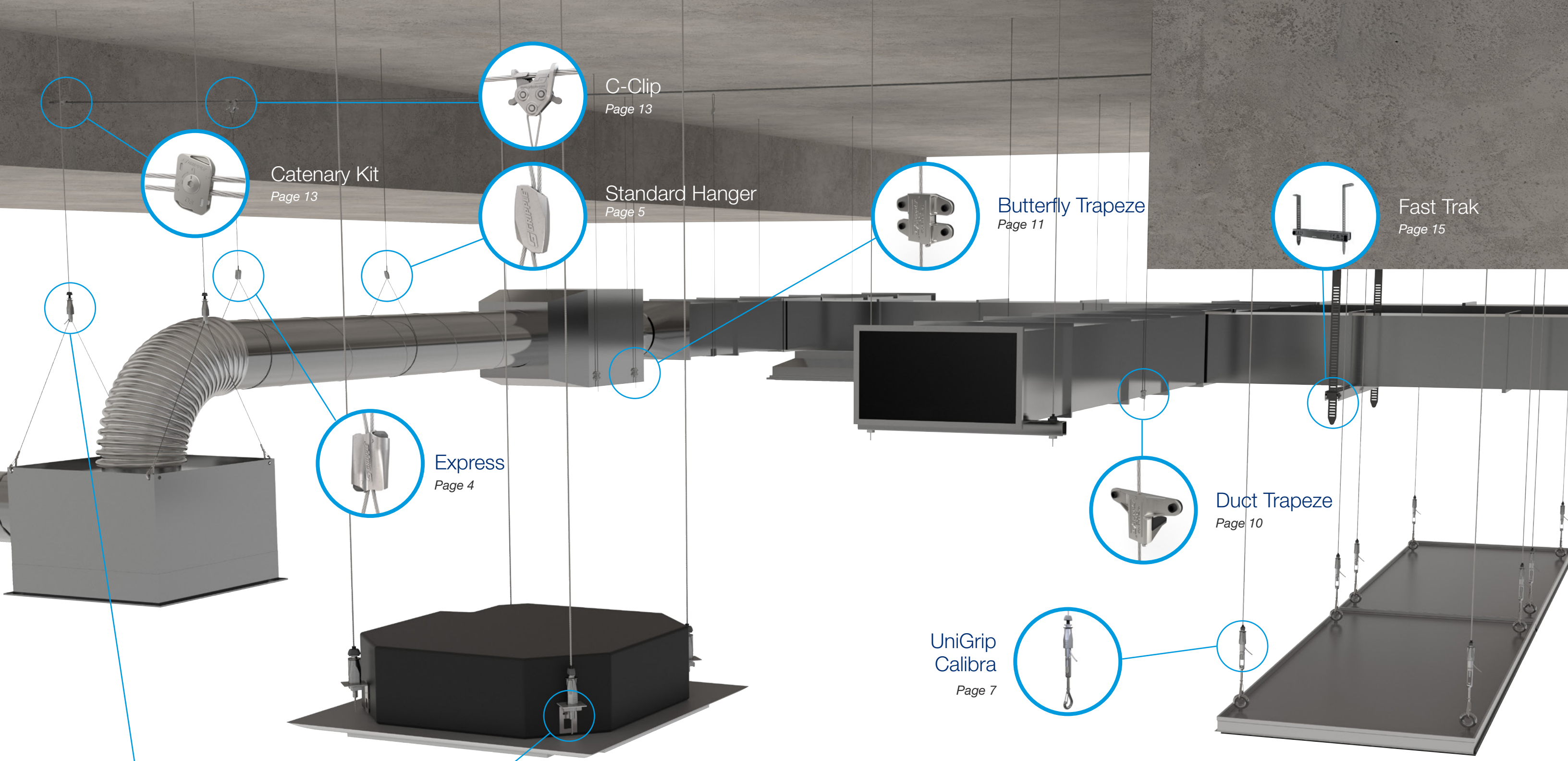


HVAC Solutions

Complete suspension systems for a variety of ductwork and HVAC services



- Ready-to-use solutions
- Easy and efficient installation
- Versatile configurations



C-Clip
Page 13

Catenary Kit
Page 13

Standard Hanger
Page 5

Butterfly Trapeze
Page 11

Fast Trak
Page 15

Express
Page 4

Duct Trapeze
Page 10

UniGrip
Calibra
Page 7

UniGrip Y-Fit
Page 7

UniGrip
Page 6

The Gripple® range of hangers for HVAC applications has been developed to provide a fast and versatile solution for suspending ductwork, heaters, air conditioning, radiant panels, and plenum boxes.

Our products are designed to save you time and labour costs, thus improving the efficiency of your installation. Unlike traditional suspension methods, Gripple kits do not require cutting or filing. Gripple suspension solutions offer aesthetic design without compromising on strength, and are supplied in ready-to-use kits with a choice of cable length and end fixing.

Products shown only for internal use. Images shown for illustrative purposes only. Please refer to product installation instructions for full information.

Express

For the fast suspension of a variety of services, designed with an easy push-button release mechanism.

Versatile – Express No. 1 is ideal for signage, shop fitting, lighting and other lightweight fixtures. Express No. 2 is ideal for mechanical and electrical applications

Quick – ergonomic buttons allow for rapid adjustment, no Setting Key required

Safe – no tools or 'hot works' permit required for installation, improving health and safety on-site

Aesthetic – the design complements enclosed and open soffit spaces

Lightweight – easy to move and handle on-site, whilst reducing the load on the building structure

Strong – industry approved, SMACNA verified



Available in sizes No.1 - No.2

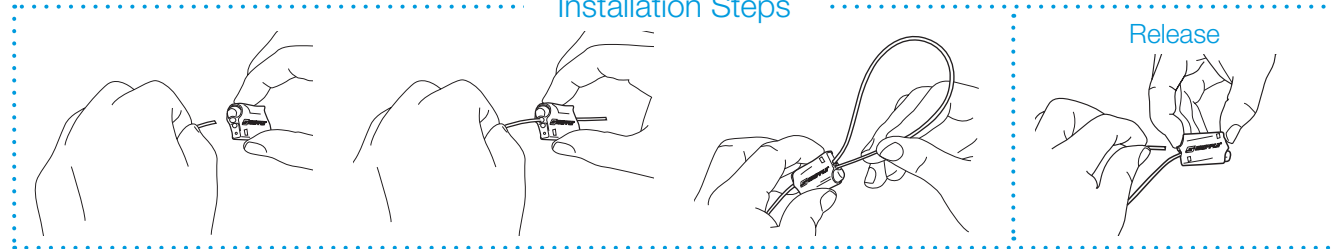


Available Sizes and Load Ratings

	No. 1 33 lb / 15 kg (5:1)		No. 2 100 lb / 45 kg (5:1)
--	--	--	---

All hangers are supplied as ready-to-use kits with a length of cable and end fixing of your choice

Installation Steps



Do not adjust under load. Contact Gripple for full product information, submittal data and technical support.

Standard Hanger

Cable hanger kit containing the original Gripple fastener, for suspending a variety of HVAC, piping, lighting, and electrical services.

Quick – fewer components compared to traditional methods, up to six times faster to install than traditional suspension systems

Safe – no tools or 'hot works' permit required for installation, improving health and safety on-site

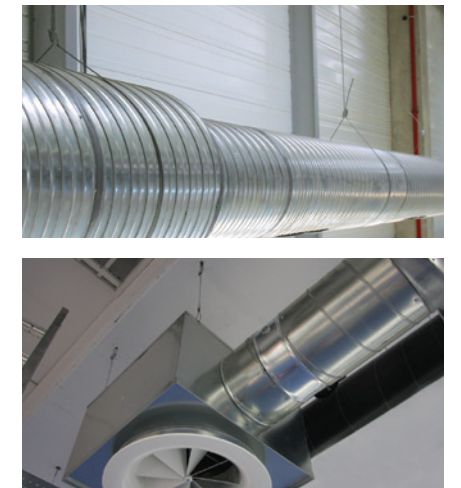
Strong – industry approved, SMACNA verified

Lightweight – easy to move and handle on-site, whilst reducing the load on the building structure

Aesthetic – the design complements enclosed and open soffit spaces



Available in sizes No.3 - No.5

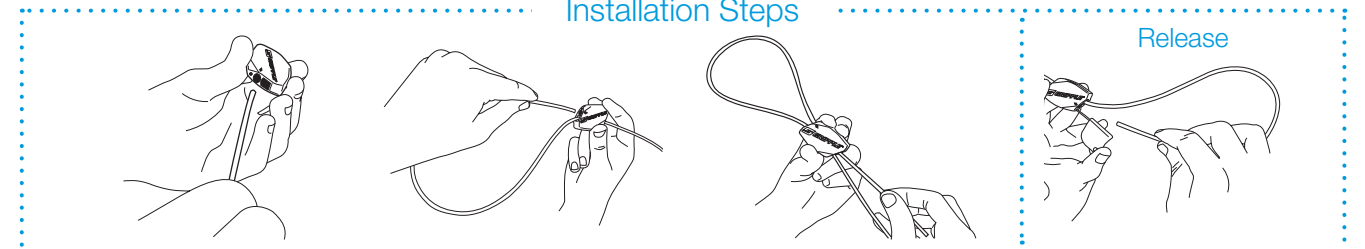


Available Sizes and Load Ratings

	No. 3 200 lb / 90 kg (5:1)		No. 4 495 lb / 225 kg (5:1)		No. 5 715 lb / 325 kg (5:1)
--	---	--	--	--	--

All hangers are supplied as ready-to-use kits with a length of cable and end fixing of your choice

Installation Steps



Do not adjust under load. Contact Gripple for full product information, submittal data and technical support.

UniGrip

Designed for fast suspension of cable containment, conduit, piping, ductwork, HVAC systems and modules.

Quick – up to 6 times faster than traditional suspension systems

Safe – can be pre-installed to channel using pre-fitted washer/nut or using retention clip reducing time working at height

Easy – integral ergonomically designed release button allows for simple adjustment

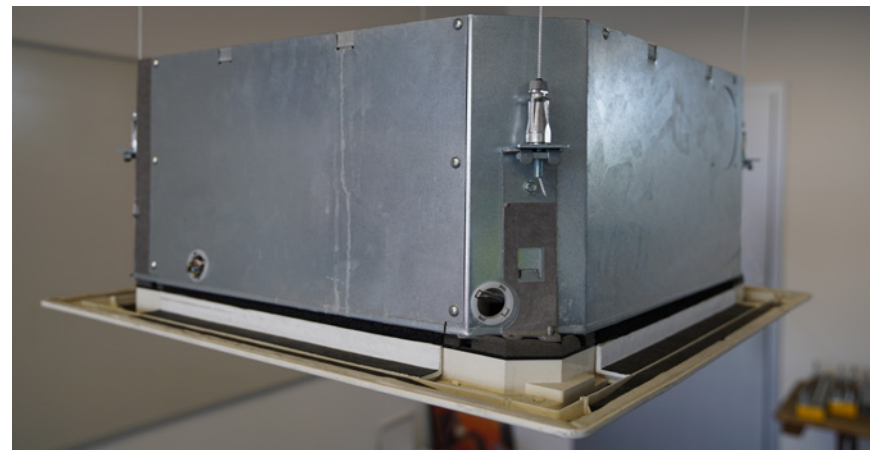
Secure – button acts as a locking screw and indicator clearly highlights the wire is locked in position for ultimate security

Versatile – variety of foot attachments available to suit applications

Strong – highest load rating capability to date, up to 550 lb / 250 kg SWL with a 5:1 safety factor



(Available with a range of feet options)

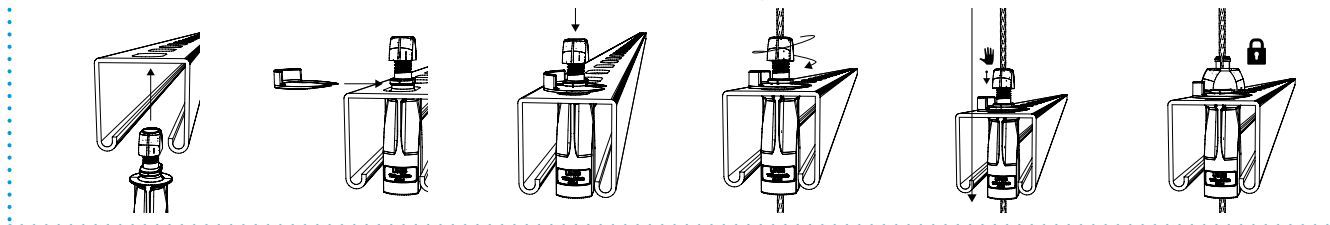


Available Sizes and Load Ratings

	No. 2 120 lb / 55 kg SWL (5:1)		No. 3 240 lb / 110 kg SWL (5:1)		No. 4 550 lb / 250 kg SWL (5:1)
--	---	--	--	--	--

All hangers are supplied as ready-to-use kits with a length of cable and end fixing of your choice

Installation Steps



Do not adjust under load. Contact Gripple for full product information, submittal data and technical support.

UniGrip Feet Options

The range of UniGrip 'feet' ensures the product suits all possible building service applications.

CENTRAL EXIT

with square washer & channel nut / hex nut

• **Ideal for:** Piping, rectangular ductwork, air conditioning units, containment, heating and ventilation units, chilled beams, busduct, modules, multi-tier applications.



SIDE EXIT

• **Ideal for:** Suspended ceilings, heavy duty lighting, busduct, plenum boxes, single pipe runs.



CABLE BASKET ADAPTER

• **Ideal for:** Cable basket and multi-tier installations.



Y-FIT

• **Ideal for:** Cable containment, signage, heating and cooling units, heavy duty lighting, radiant panels, chilled beams, balanced pipework, plenum boxes.



QT

• **Ideal for:** Piping, electrical containment, ductwork and other mechanical services when used with Gripple Pipe Brackets.



HOOK

• **Ideal for:** Heating and ventilation units, heavy duty signage, cable basket/tray, radiant panels, chilled beams.



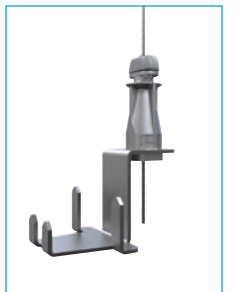
CALIBRA

• **Ideal for:** Radiant panels, chilled beams, heating, ventilation and cooling units.



PHENOLIC ADAPTER

• **Ideal for:** Phenolic & PIR fabricated ductwork.



	Standard	Central Exit	Side Exit	Cable Basket Adapter	Y-Fit	QT	Hook	Calibra	Phenolic Adapter
UniGrip No. 2	Available	Available	Available	Available	Available	Available	Available	Available	Available
UniGrip No. 3	Available	Available	Available	Available	Available	Available	Available	Available	Available
UniGrip No. 4	Available	Available	Available	Available	Available	Available	Available	Available	Available

Available Unavailable

Supplied as ready-to-use kits with a length of cable, UniGrip Hanger, and end fixing of your choice.

Stainless Steel

Used to suspend a variety of mechanical and electrical services in the food industry and high humidity environments.

Quick – fewer components compared to traditional methods, up to six times faster to install than traditional suspension systems

Durable – ceramic rollers and stainless steel springs for corrosion resistance in high humidity environments

Safe – no tools or 'hot works' permit required for installation, improving health and safety on-site

Easy – simple adjustment using the Setting Key supplied reduces time spent working at height

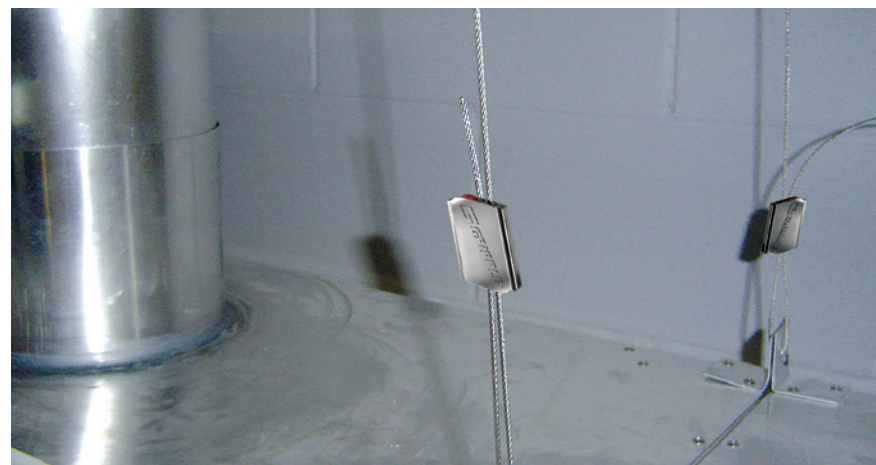
Strong – industry approved, SMACNA verified

Lightweight – easy to move and handle on-site, whilst reducing the load on the building structure

Aesthetic – the design complements enclosed and open soffit spaces



Available in sizes No. 2 - No. 3



Available Sizes and Load Ratings



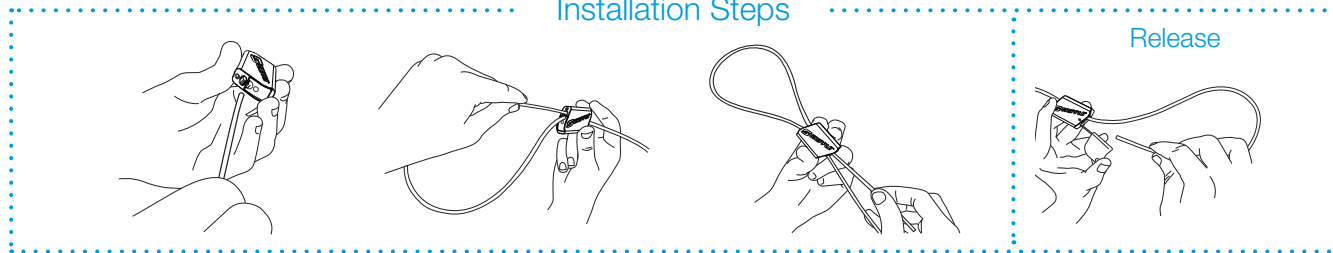
No. 2
100 lb / 45 kg SWL
(5:1)



No. 3
200 lb / 90 kg SWL
(5:1)

All hangers are supplied as ready-to-use kits with a length of cable and end fixing of your choice

Installation Steps



Do not adjust under load. Contact Gripple for full product information, submittal data and technical support.

Product Codes

How to work out your unique product code

1 CHOOSE YOUR PRODUCT

Express No.1 XP1	Express No.2 XP2	Standard Hanger No.3 HF3	Standard Hanger No.4 HF4	Standard Hanger No.5 HF5	Stainless Steel Hanger No. 2 HF2	Stainless Steel Hanger No. 3 HF3	UniGrip UG2 UG3	UniGrip Central Exit UG2-FN UG3-FN UG4-FN
UniGrip Y-Fit UG2-Y UG3-Y	UniGrip Phenolic Adapter UG2-PA	UniGrip Central Exit Cable Basket Adapter UG2-CBA	UniGrip Side Exit UG2-3/8SE-FN UG3-3/8SE-FN	UniGrip Hook UG2-HK	UniGrip QT UG2-QT UG3-QT	UniGrip Calibra UG2-CAL	* Replace the FN code with CN for Channel Nut.	

2 CHOOSE YOUR END FIXING

Loop LG	Stud S*G	Toggle TG	Hook HG	Mini Hook MHG	Eyelet EYQG	45° Eyelet EY45*G	90° Eyelet EY90*G	Cladding Hook CHG
C-Clip 1/8" CC-1/8	C-Clip 1/4" CC-1/4	Ceiling Anchor CWHQ	Ring Anchor RAG	Shotfire SF35	Shotfire for Post-Tension Concrete C945	Swivel Toggle STG For use with Spider only	Spider Cast-in-Place Insert SBK Standard * Add the code SXWF after cable length, for example: HF2-STG-5FT-SXWF	Metal Deck Insert MDI-Y * Add the code SXMD after cable length, for example: HF2-STG-5FT-SXMD
Shot Fire for Post Tension Concrete NS90	Shot Fire for concrete or steel CCMX	*Stud, Barrel and 90o Eyelet available in 1/4" or 3/8" Where * appears, add 'Q' for ., or '3/8' for 3/8"						

3 CHOOSE YOUR CABLE LENGTH

5FT 10FT 15FT 20FT 30FT

Enter your unique product code (e.g. UG2-LG-10FT):

-

For further product information please call 1 866 474 7753 or visit our website www.gripple.com

Duct Trapeze

Ideal for fast suspension of rectangular ducting or similar services.

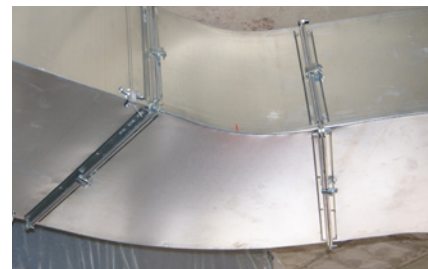
Quick – adjustment pin allows for rapid adjustment, no Setting Key required

High performance – rubber pad prevents air leakage and dampens vibration


Strong – industry approved, SMACNA verified

Compatible – suitable for all sheet metal gauges according to SMACNA

Safe – no tools or 'hot works' permit required for installation, improving health and safety on-site

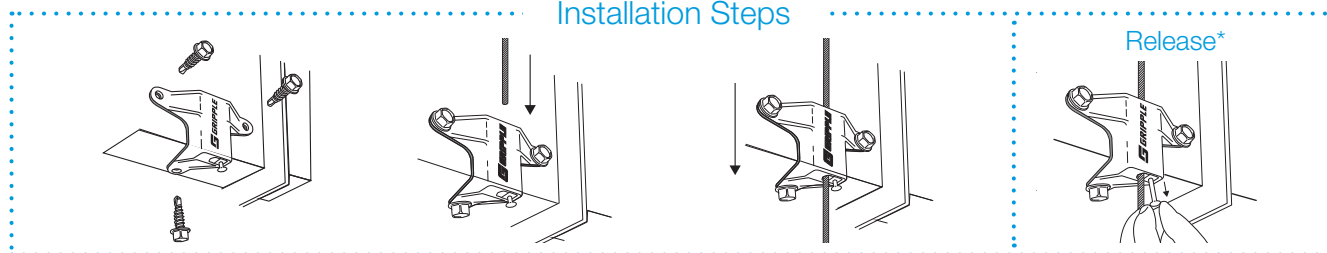


Available Sizes and Load Ratings

	<p>No. 2 100 lb / 45 kg SWL (5:1)</p>
---	--

All hangers are supplied as ready-to-use kits with a length of cable and end fixing of your choice

Installation Steps



*When releasing: 1. Remove load, 2. Pull tail wire, 3. Activate pin. Do not adjust under load.

Butterfly Trapeze

Ideal for fast suspension of rectangular ducting or similar services that are hung close to the ceiling.

Simple – can be installed directly to the ductwork at ground level, eliminating the need for channel

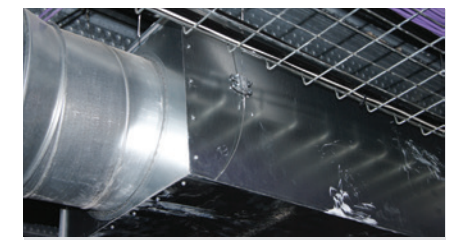
Quick – adjustment pin allows for rapid adjustment, no Setting Key required

High performance – rubber pad prevents air leakage and dampens vibration


Strong – industry approved, SMACNA verified

Compatible – suitable for all sheet metal gauges according to SMACNA

Safe – no tools or 'hot works' permit required for installation, improving health and safety on-site

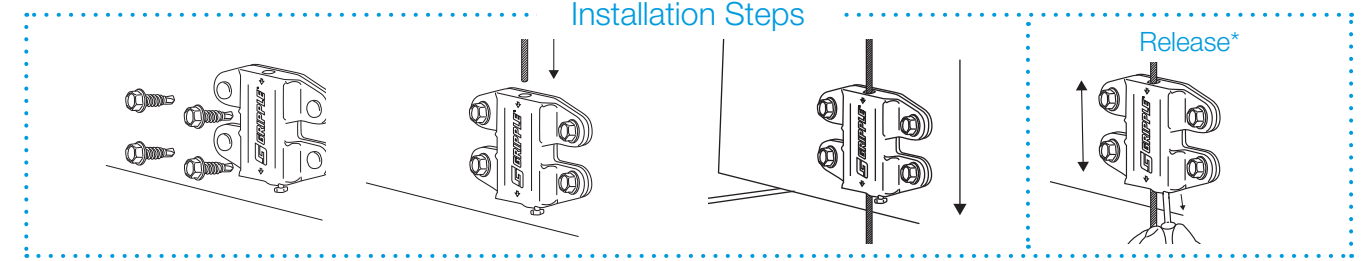


Available Sizes and Load Ratings

	<p>No. 2 100 lb / 45 kg SWL (5:1)</p>
---	--

All hangers are supplied as ready-to-use kits with a length of cable and end fixing of your choice

Installation Steps



*When releasing: 1. Remove load, 2. Pull tail wire, 3. Activate pin. Do not adjust under load.

Trapeze Kit Codes

How to work out your unique product code

1 CHOOSE YOUR PRODUCT



Duct Trapeze
DT2



Butterfly Trapeze
BT2

2 CHOOSE YOUR END FIXING



Loop
LG



Stud
S*G



Toggle
TG
TQG



Hook
HG



Mini Hook
MHG



Eyelet
EYQG



45° Eyelet
EY45*G



90° Eyelet
EY90*G



C-Clip 1/8"
CC-1/8



C-Clip 1/4"
CC-1/4



Top Hat Barrel
BB14



Barrel
B*G



End Stop
EG



Cladding Hook
CHG



Ceiling Anchor
CWHQ



Swivel Toggle
STG



Spider Cast-in-Place Insert
SBK Standard
* Add the code SXWF after cable length, for example: HF2-STG-5FT-SXWF



Eyelag 1/4"
ELD / ELS
ELW
* D= 2", S= 2.75"
W= 3"



Shot Fire for Post Tension Concrete
C945



Shot Fire for Post Tension Concrete
NS90



Shot Fire
SF35



Shot Fire for concrete or steel
CCMX



QT Barrel
QTB



Ring Anchor
RAG

*Stud, Barrel and 90° Eyelet available in 1/4" or 3/8" Where * appears, add 'Q' for 1/4", or '3/8' for 3/8"

3 CHOOSE YOUR CABLE LENGTH

5FT

10FT

15FT

20FT

30FT

Enter your unique product code (e.g. DT2-LG-10FT):

- *

PRODUCT

END FIXING

CABLE LENGTH

Catenary Kit & C-Clip

Create secure, overhead spans by running high strength cable between two fixed points. Ideal for applications where no direct vertical anchor point is available.

Versatile – can easily be used for a variety of applications including lighting, HVAC, pipework and electrical containment

Quick – fewer components compared to traditional methods, up to six times faster to install than traditional suspension systems

Aesthetic – the design complements enclosed and open soffit spaces providing a discrete finish

Safe – no 'hot works' permit required for installation, improving health and safety on-site

Easily tensioned – using the Gripple Catenary Tensioning Tool reducing time spent working at height

Secure – locking mechanism in the Lockable Plus prevents dynamic movements



Available in 1/8" and 1/4" systems

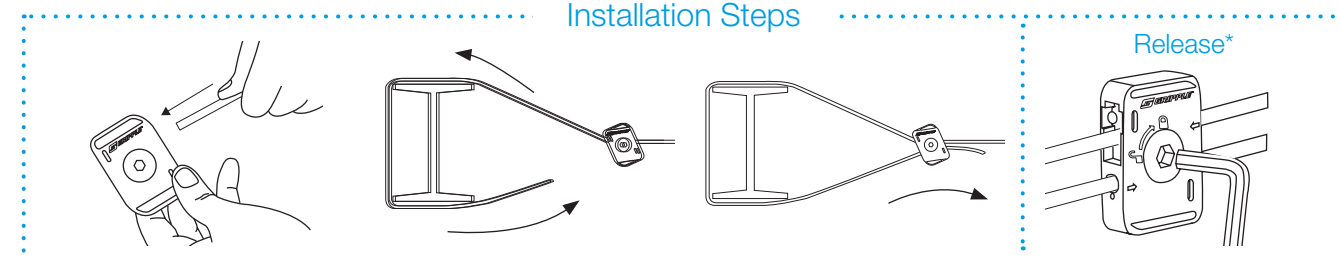


Available Sizes and Load Ratings

	D3 70 lb / 30 kg SWL (free span) (5:1)		D6 220 lb / 100 kg (free span) (5:1)
--	---	--	---

All hangers are supplied as ready-to-use kits with a length of cable and end fixing of your choice

Installation Steps



Do not adjust under load. Contact Gripple for full product information, submittal data and technical support.

Catenary Kit Codes

How to work out your unique product code

1 CHOOSE YOUR PRODUCT



1/8" / 3 mm Catenary Kit
CTI-1/8



1/4" / 6 mm Catenary Kit
CTI-1/4

2 CHOOSE YOUR CABLE LENGTH

- 10FT
- 15FT
- 20FT
- 25FT
- 50FT
- 75FT
- 100FT

Enter your unique product code (e.g. CTI-1/8-75FT):

PRODUCT

CABLE LENGTH

C-Clip End Fixing can be ordered to suspend any Gripple hanger from the Catenary Kit. (see product code pages)



C-Clip 1/8" / 3 mm
End Fixing Code
CC-1/8

BLACK LINE

C-Clip 1/4" / 6 mm
End Fixing Code
CC-1/4

Catenary Kit Wall Brackets are available as a wall attachment point for the Catenary Kit using the code below.



CAT-BRACKET-4IN

For further product information please call +1 905 458 8700 or visit our website www.gripple.com.

Fast Trak™

Pre-fabricated rigid support solution offering speed, flexibility, and efficient use of space, for the installation of electrical containment, conduit, ductwork, pipework and other mechanical services.

- Quick** – up to six times faster to install than traditional suspension systems
- Safe** – pre-fabricated system which removes the need to cut threaded rod or channel on-site
- Tool free** – bracket can be moved up and down the tracks to accommodate changes in position during installation
- Secure** – safety locks ensure security once brackets and tracks are in place
- Zero waste** – tracks bend neatly under bracket
- Aesthetic** – tracks can be concealed using Fast Trak Bracket Cover for a discrete finish
- Space saver** – can be multi-tiered to accommodate additional services
- Easy measurement** – indicators at each end of the bracket can be used as a measurement guide when marking fixing points in the soffit



Available in nine bracket widths and five drop lengths

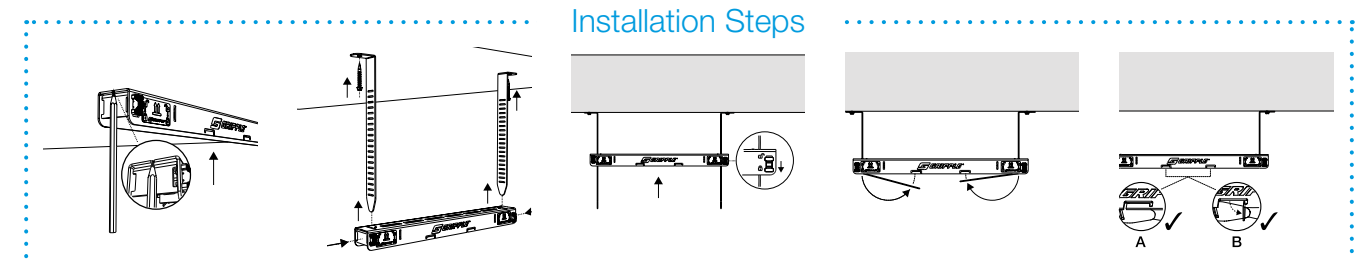


Available Bracket Sizes

FTB-250 – 400 lb / 180 kg SWL (3:1)	FTB-600 – 400 lb / 180 kg SWL (3:1)	FTB-1050 – 200 lb / 90 kg SWL (3:1)
FTB-350 – 400 lb / 180 kg SWL (3:1)	FTB-750 – 400 lb / 180 kg SWL (3:1)	FTB-1200 – 200 lb / 90 kg SWL (3:1)
FTB-450 – 400 lb / 180 kg SWL (3:1)	FTB-900 – 400 lb / 180 kg SWL (3:1)	FTB-1500 – 200 lb / 90 kg SWL (3:1)

Available Track Sizes

FTT-135 – 200 lb / 90 kg SWL (5:1)	TT-785 – 200 lb / 90 kg SWL (5:1)
FTT-285 – 200 lb / 90 kg SWL (5:1)	FTT-1035 – 200 lb / 90 kg SWL (5:1)
FTT-535 – 200 lb / 90 kg SWL (5:1)	

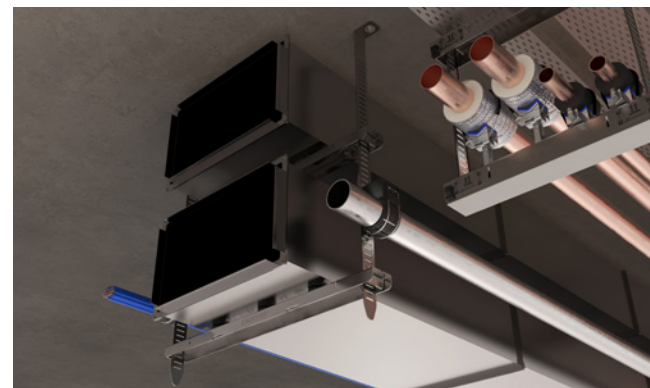
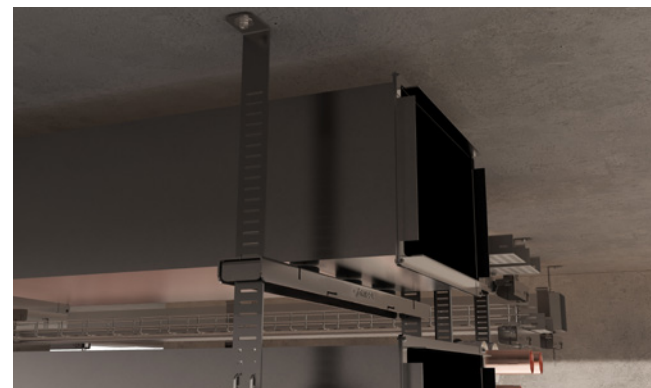


Do not adjust under load. Contact Gripple for full product information, submittal data and technical support.

Fast Trak™ - Low Profile

A low profile alternative to the standard Fast Trak solution offering greater space efficiency. Ideal for use with electrical containment, conduit, pipework and mechanical services in ultra-restricted ceiling spaces.

- Space saver** – 13/16" / 21 mm bracket depth
- Quick** – up to six times faster to install than traditional suspension systems
- Safe** – pre-fabricated system which removes the need to cut threaded rod or channel on site
- Tool free** – brackets can be moved up and down the tracks to accommodate changes in position during installation
- Easy measurement** – indicators at each end of the bracket can be used as a measurement guide when marking fix points in the ceiling
- Aesthetic** – tracks bend neatly under bracket or can be concealed using Fast Trak Bracket Cover

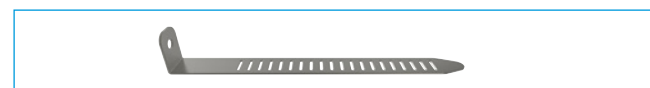


Available Bracket Sizes



SWL (3:1)		
FTBL-250 – 400 lb / 180 kg	FTBL-600 – 180 lb / 80 kg	FTBL-1050 – 70 lb / 32 kg
FTBL-350 – 400 lb / 180 kg	FTBL-750 – 140 lb / 64 kg	FTBL-1200 – 50 lb / 23 kg
FTBL-450 – 400 lb / 180 kg	FTBL-900 – 105 lb / 48 kg	

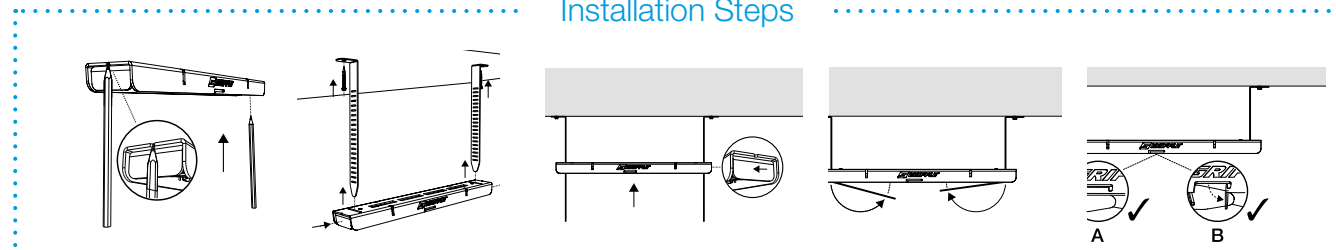
Available Track Sizes



SWL (5:1)	
FTT-135 – 200 lb / 90 kg	FTT-785 – 200 lb / 90 kg
FTT-285 – 200 lb / 90 kg	FTT-1035 – 200 lb / 90 kg
FTT-535 – 200 lb / 90 kg	

* Load rating assumes uniform load across the width of the bracket. Contact Gripple for max. single point load.

Installation Steps

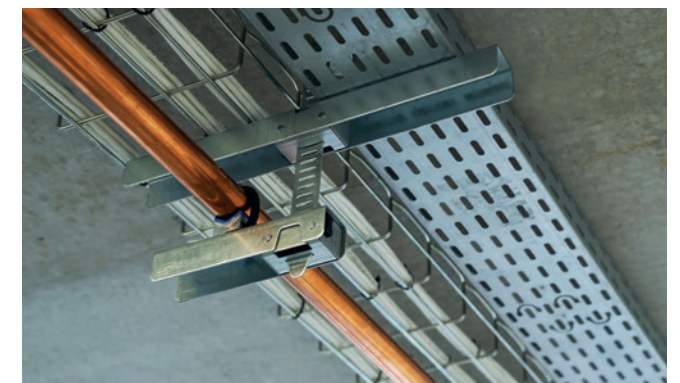


Do not adjust under load. Contact Gripple for full product information, submittal data and technical support.

Fast Trak™ - Side Loading

Pre-fabricated side loading bracket solution offering speed and flexibility for the installation of lightweight electrical containment, pipework, and other mechanical services in restricted places.

- Quick** – up to four times faster to install than traditional suspension systems
- Safe** – pre-fabricated system which removes the need to cut threaded rod or channel on-site
- Tool free** – bracket can be moved up and down the tracks to accommodate changes in position during installation
- Secure** – safety locks ensure security once brackets and tracks are in place
- Space saver** – can be multi-tiered to accommodate additional services
- Easy installation** – lightweight services can be side loaded onto the bracket
- Neat & tidy** – system can be stacked on-site to reduce storage
- Fire rated** – for more information please contact Gripple Technical Services

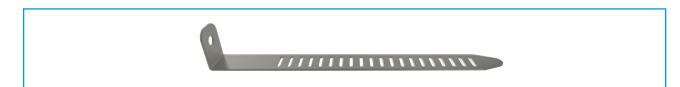


Available Bracket Sizes



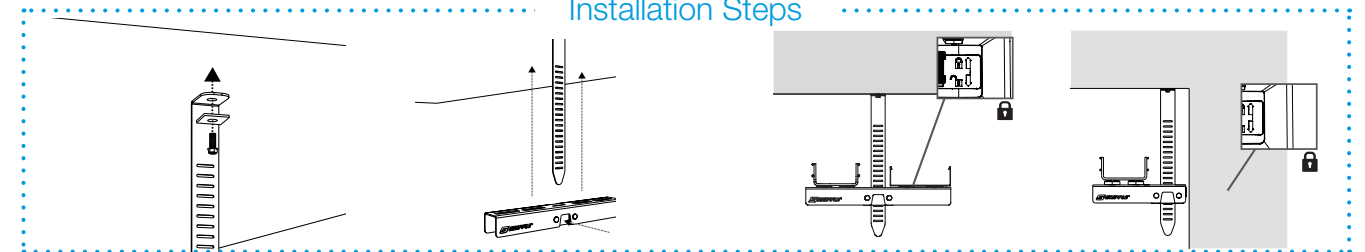
Single Load	Twin Load
FTBS-180 – 33 lb / 15 kg SWL (3:1)	FTBT-200 – 66 lb / 30 kg SWL (3:1)
	FTBT-300 – 66 lb / 30 kg SWL (3:1)
	FTBT-400 – 66 lb / 30 kg SWL (3:1)

Available Track Sizes



FTT-135 – 200 lb / 90 kg SWL (5:1)
FTT-235 – 200 lb / 90 kg SWL (5:1)

Installation Steps



Internal applications only. Do not adjust under load. No dynamic loading.

Low Profile Pipe Bracket

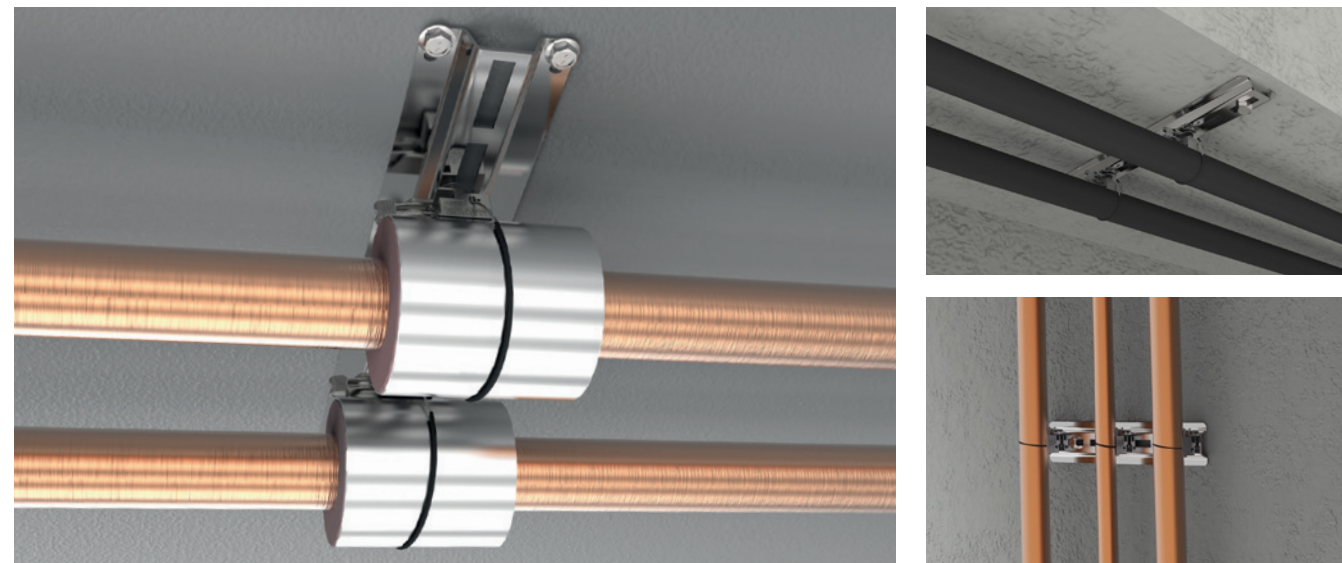
Low Profile Pipe Brackets are supplied with QT Compact Clamps for lower profile support of piping.

Quick – pre-cut lengths eliminating the need for cutting channel on-site, allowing more productive use of labour

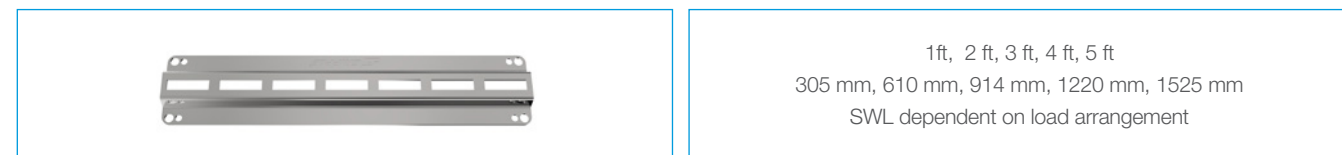
Versatile – can be bolted directly to soffit or wall with less than 5/8" depth and can also be used as a shallow bearer for support of electrical services

Compatible – brackets are supplied with QT Universal Clamps or QT Compact Clamps featuring quarter turn fixing

Strong – up to 330 lb / 150 kg load rating in sizes ranging from 1 ft to 5 ft

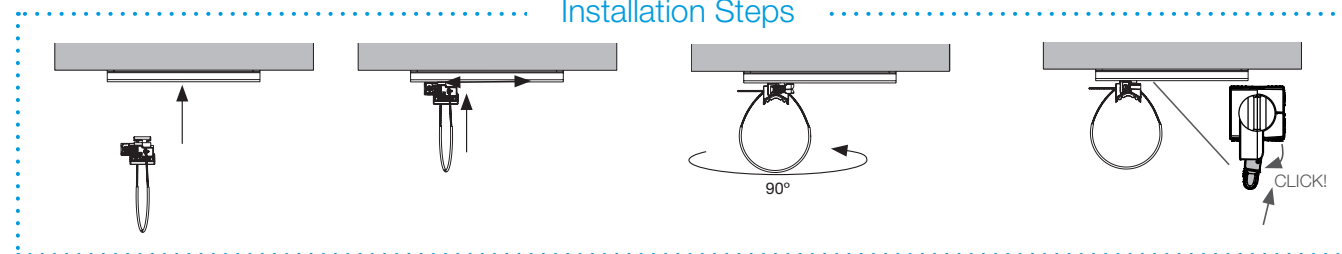


Size Variants



Supplied as ready-to-use kits with a choice of QT Clamps or QT Compact Clamps.

Installation Steps



Pipe Support Kit Codes

How to work out your unique product code

1 CHOOSE YOUR PIPE BRACKET

Pipe Support Bracket

1 ft / 305 mm PB1	1.5 ft / 457 mm PB1.5	2 ft / 610 mm PB2	2.5 ft / 762 mm PB2.5
3 ft / 914 mm PB3	3.5 ft PB3.5	4 ft / 1220 mm PB4	5 ft / 1525 mm PB5

Low Profile Pipe Bracket

1 ft / 305 mm LPB1	2 ft / 610 mm LPB2	3 ft / 914 mm LPB3	4 ft / 1220 mm LPB4
5 ft / 1525 mm LPB5			

2 CHOOSE YOUR CLAMP QUANTITY

2

3

4

5

6

7

8

3 CHOOSE YOUR TYPE OF CLAMP

4 CHOOSE YOUR PAD OPTION

QT Clamp
T

QT Compact Clamp
C

Threaded Clamp
3/8

Standard
S

Large
L

Acoustic
A

To order the GCS Clamp, please use either code GCS-24 or GCS-30

Enter your unique product code (e.g. LPB3-3GC2-C-24IN-S):

				-		G	C	2	-			-	2	4	I	N	-	
PIPE BRACKET				CLAMP QUANTITY				TYPE OF CLAMP			CABLE LENGTH (IN)				PAD OPTION			

Stacking Accessories

UniGrip

UniGrip accessories are only available for multi-tier applications.

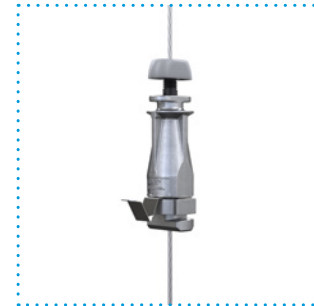
Standard No. 2 & 3

- Designed for non-mechanical fixing through brackets
- Supplied with retention clip for pre-fabrication applications



QT No. 2 & 3

- Designed for use with Gripple Pipe Support Brackets
- Quarter turn installation, no mechanical fix required



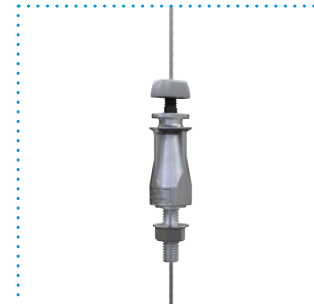
Central Exit Channel Nut

- Designed for services suspended with channel
- Supplied with square washer and channel nut
- Male thread for mechanical fixing
- 3/8" (UniGrip No. 2), 3/8" (UniGrip No. 3), 1/2" (UniGrip No. 4)



Central Exit Flange Nut

- Designed for services suspended with Gripple Brackets
- Supplied with hex nut
- Male thread for mechanical fixing
- 3/8" (UniGrip No. 2), 3/8" (UniGrip No. 3), 1/2" (UniGrip No. 4)



Trapeze

Butterfly Trapeze

Ideal for use with light ductwork. Combine Butterfly Trapeze as an accessory with any Trapeze kit for multi-tiered installations. Maximum load rating of 100 lb / 45 kg with a 5:1 safety factor.



Duct Trapeze

Ideal for use with rectangular ductwork. Combine Duct Trapeze as an accessory with any Trapeze kit for multi-tiered installations. Maximum load rating of 100 lb / 45 kg with a 5:1 safety factor.



Accessories

A variety of additional accessories are available to complement the product range, increasing versatility and ease of installation.

Spider (Wood Form)

Universal, versatile, cast-in-place concrete insert for wood form construction, allowing for fast and easy suspension of all building services.



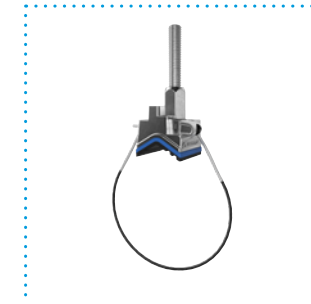
Spider (Metal Deck)

Universal, versatile, cast-in-place concrete insert for metal deck construction, allowing for fast and easy suspension of all building services.



Threaded Clamp

Ideal for the quick and easy support of spiral ductwork in conjunction with threaded rod. Up to 6 times faster than traditional methods.



Trapeze Bracket

Combine with Trapeze No.2 and No.3 for easy attachment to rectangular ductwork or services. Maximum load rating of 100 lbs (No.2), 200 lbs (No.3) with a 5:1 safety factor.



Beam and Purlin Clips

Available in a variety of sizes and models for attachment to beams and purlins.



Corner Saddle

Right-angled molding attaches to bottom corners of rectangular duct to protect against friction from the cable hanger. Available in standard and magnetic versions.



Cable Cutters

Purpose-made for use on up to 3/16" cable. For use when terminating cable lengths.



Vibration Dampener

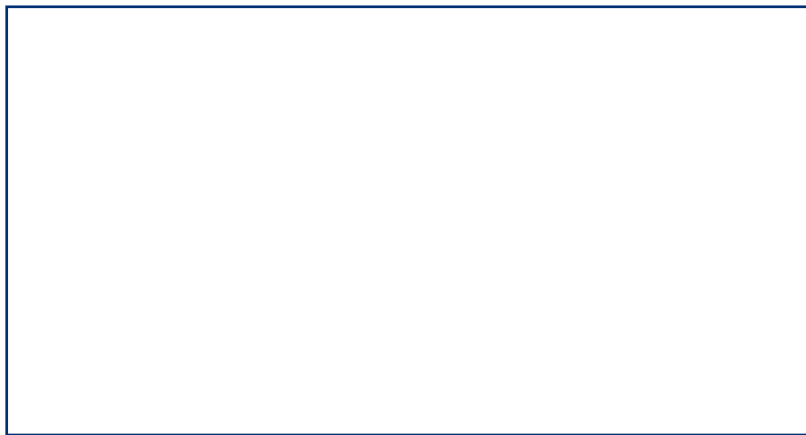
Designed for vibration reduction when installing rectangular ducting on Fast Trak.





www.gripple.com

cainfo@gripple.com



Gripple Canada Inc

6665 Tomken Road
Units 9-10
Mississauga, ON L5T 2C4
Canada

T | +1 905 458 8700

E | cainfo@gripple.com

Gripple Ltd (Headquarters)

The Old West Gun Works
Savile Street East
Sheffield S4 7UQ
UK

T | +44 (0) 800 018 4264

F | +44 (0) 114 275 1155

E | info@gripple.com

Gripple Europe SARL

1, rue du Commerce
BP 37
67211 Obernai Cedex
France

T | +33 (0)3 88 95 44 95

F | +33 (0)3 88 95 08 78

E | frinfo@gripple.com

Gripple Inc

1611 Emily Lane
Aurora
IL 60502
USA

T | +1 866 474 7753

F | +1 800 654 0689

E | grippleinc@gripple.com

Gripple India

C-115, Industrial Area
Phase I, Naraina
New Delhi-110028
India

T | +91-11-45136817

F | +91-11-45136817

E | ininfo@gripple.com

Gripple Japan K.K

2-57 Tsukizi-cho
Hyogo-ku, Kobe-shi
Hyogo, 652-0845
Japan

T | +81 (0) 78 681 2121

F | +81 (0) 78 681 2122

E | japan@gripple.com



A GLIDE company



BUS-BROC-BUS-CAN-ENG-3123

Published June 2020

Please refer to www.gripple.com for the most up to date user advice and product information.



© 2020 Gripple.

Gripple is a registered trademark of Gripple Limited.
Company registered in England No. 1772901, VAT Reg No. GB 600 1951 88