

CASE STUDY

LumiGroup
Montréal, Québec, Canada





TIME SAVINGS
15 HOURS

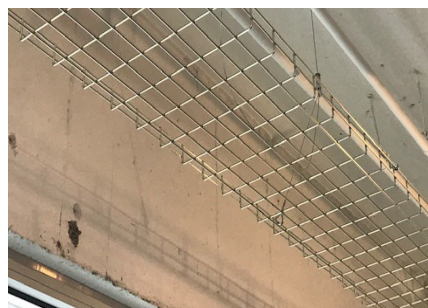
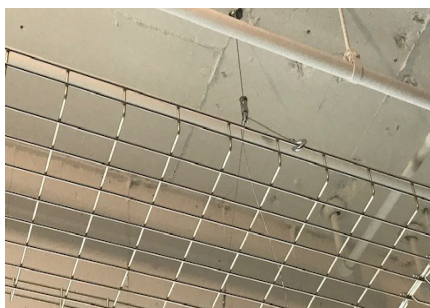
WORKING DAYS SAVED*
2 DAYS

LABOUR SAVINGS
\$900

In order to complete the retrofit of LumiGroup Montréal showroom, and to speed up the installation process - Gripple were chosen for suspension of the Electrical Services on this project. The project benefitted from using the **UniGrip - Y-Fit™** hanger with **Ceiling Anchor** end fixing to provide a secure installation of the cable basket tray.

Project Summary	
Building type	Commercial
Consultant	Blondin Fortin
MEP Contractor	Fargio Rinaco
Building Structure	Concrete
Services	Cable Basket Tray

Featured Products	
 <p>UniGrip™</p>	 <p>Ceiling Anchor</p>



“Fast, easy and flexible solution. Only 1 guy needed to do the job with **no material waste**. By using Gripple I was able to save time on this project and complete this job in less than 1 week.”

- Laszlo, Foreman, Fargio Rinaco -

COST SAVING SUMMARY

	Gripple solution	Traditional method
Overview	UniGrip - Y-Fit™ with Ceiling Anchor	Threaded Rod, Unistrut, Nuts, Washers and Anchors
Material cost	\$960	\$568
Installation time	5 hours	20 hours
Labour rate (per hour)	\$60	\$60
Total labour cost	\$300	\$1200
Total cost	\$1340	\$1768

*Figure based on one installer working for eight hours a day

CASE STUDY

LumiGroup
Montréal, Québec, Canada



PROJECT DETAILS

LumiGroup is Québec's largest lighting agency with specialist consultants who deliver client expectations. On this project the MEP Contractor - Fargio Rinaco, only had one week to complete the retrofit installation and they required a suspension solution which would be quick and simple to install, along with eliminating the need for any pre-work on site.

GripplE was chosen by Fargio Rinaco for the suspension of the cable basket trays, and the speed of installation enabled this project to be completed on time. Before GripplE products could be installed they had to be approved by the Consultant and Project Owner – this didn't cause any delays to the installation process, as GripplE were able to provide the relevant documents and product approvals for the products.

GripplE's UniGrip - Y-Fit™ hanger system is up to six times faster to install than traditional suspension systems. It is a complete, off-site solution which minimizes health and safety concerns, along with zero waste. With the installation process been faster it meant no pre-work, such as cutting or filling was required.

Overall, the installation on this project took just 5 hours to complete, if traditional methods had been chosen it would have taken over 20 hours to install, therefore using GripplE was ideal for the Contractor on this time-restricted project. The Contractor saved 15 hours in total due the quick installation which equated to an overall saving of \$428.

