



TIME SAVINGS

14 DAYS

LABOUR SAVINGS

€ 15 000

TOTAL SAVINGS

€ 3 939

During the construction of a market hall in Heiligenhaus (Germany), several applications of different services were suspended with Grippple's time-saving suspension and fastening systems. This shortened the total installation time for the various trades by nearly three weeks and at the same time enabled a cost saving of around € 4,000.

BUILDING TYPE	SERVICES
MARKET HALL	ELECTRICAL, VENTILATION AND PIPEWORK
BUILDING STRUCTURE	APPLICATIONS
CLADDING ROOF AND CONCRETE CEILING	DUCTS, CABLE TRAYS, HEATING, COOLING AND DRINKING WATER

PROJECT DETAILS

Different services call for different requirements - Grippple has a suitable solution for all requirements on a construction site, saving the installer time and therefore costs.

The cable trays were installed using a traditional strut. However, this was not suspended with threaded rod as usual, but with the Grippple UniGrip - Central Exit. The cable trays had to be fixed to a cladding roof as well as to a concrete ceiling. Grippple suspension systems are delivered to site as ready-to-use kits with the appropriate ceiling-side end fixing, ready for immediate use. In this case, the customer chose the M8 Stud end fixing for the concrete ceiling and the Cladding Hook for the cladding roof.

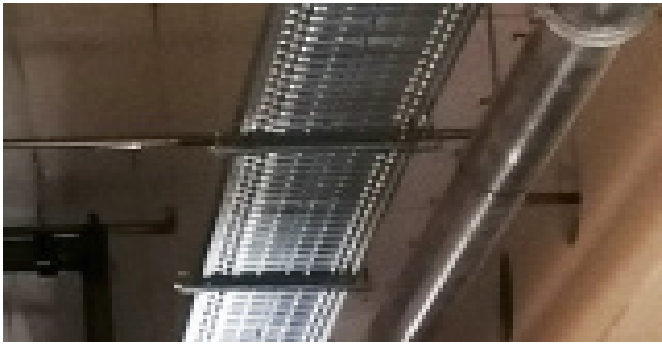
The installer for HVAC applications was able to completely eliminate the use of conventional struts. The Grippple TPZGR is installed directly to the rectangular ventilation duct itself on both sides. This eliminates the need for transport, storage and cutting of the struts on site. Again, the ducts were suspended to various substrates and Grippple supplied matching ceiling-side end fixings with the ready-to-use kits in each case.

For suspending the drinking water pipes, the Grippple (L)PB Set was used. In this case, the strut is fixed directly to the concrete. Universal Pipe Clamps are very easily and quickly mounted on the prefabricated rail. The advantage of the Universal Pipe Clamp

is its multifunctionality, because the clamp can be used quite flexibly for any pipe diameter. The PB Set can be quickly and easily suspended from the ceiling with the UniGrip - Central Exit, and was also used for the suspension of drinking water pipes.

The innovative UniGrip - Y-Pipe was used for suspending the heating and cooling pipes. The main advantage of this product is that it has only one fixing point on the ceiling and can fasten two pipes at the same time. The UniGrip - Y-Pipe is available both with and without a pre-assembled Universal Pipe Clamp. With both variants, the installer benefits from fast installation. Furthermore, the PB Set, which was already used for the drinking water pipes, was used for the installation of the cooling pipes. Grippple also supplied appropriate insulation (CRUFLEX) for all cooling pipes.




ELECTRICAL



“Thanks to ready-to-use kits with appropriate ceiling-side endings for **both concrete and the cladding roof**, we were able to suspend the cable trays quickly and without any problems.”

- Electrician-

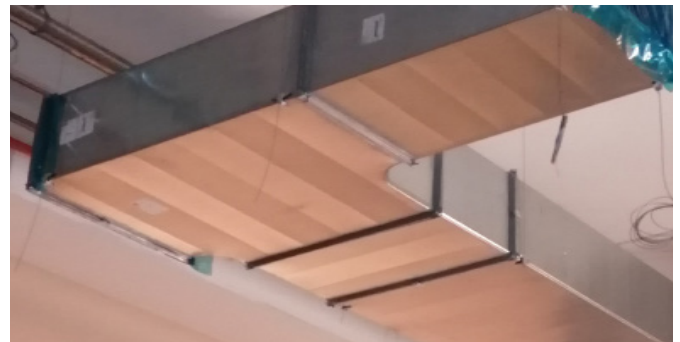
	Gripple solution	Traditional method
Material cost	€ 6350	€ 2000
Installation time	30,5 hours	132,17 hours
Labour rate (per hour)	€ 45	€ 45
Total labour cost	€ 1372,50	€ 5947,65
Total cost	€ 7722,50	€ 7947,65

Featured products		
UniGrip - Central Exit	End fixing Stud M8	End fixing Cladding Hook
		




VENTILATION

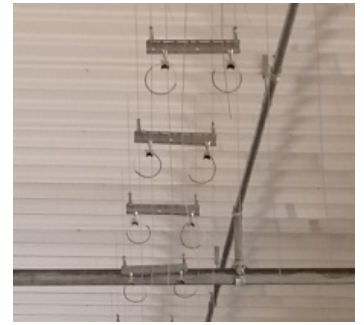
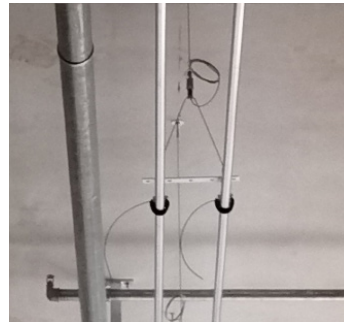
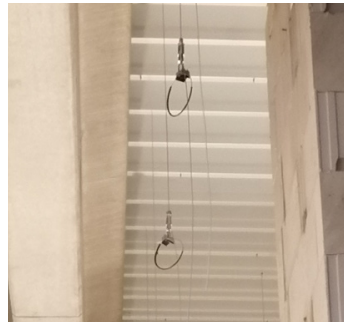
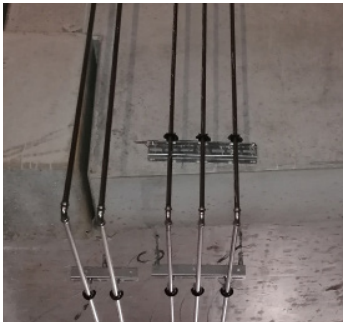
“This method of suspension **completely eliminates the use of struts**. We were able to clearly save on purchasing, storing and transporting struts.”

- Ventilation installer



	Gripple solution	Traditional method
Material cost	€ 3000	€ 1592
Installation time	21,9 hours	65,8 hours
Labour cost (per hour)	€ 45	€ 45
Total labour cost	€ 985,50	€ 2961
Total cost	€ 3985,50	€ 4553

Featured products		
TPZGR	End fixing Stud M8	End fixing Toggle
		



DRINKING WATER		Griipple solution	Traditional method
	Material cost	€ 2023	€ 1523
	Installation time	26,18 hours	65,03 hours
	Labour rate (per hour)	€ 45	€ 45
	Total labour cost	€ 1178,10	€ 2926,35
	Total cost	€ 3201,10	€ 4449,35

Featured products

PB Kit	PB Kit	Universal Clamp Pipework	Unigrip - Stud

HEATING		Griipple solution	Traditional method
	Material cost	€ 6025	€ 2046
	Installation time	37,48 hours	134,03 hours
	Labour rate (per hour)	€ 45	€ 45
	Total cost	€ 7711,60	€ 8077,35

Featured products

UniGrip - Y-Pipe	End fixing Stud M8	End fixing Toggle

COOLING		Griipple solution	Traditional method
	Material cost	€ 2831	€ 2005
	Installation time	18,33 hours	70,73 hours
	Labour rate (per hour)	€ 45	€ 45
	Total cost	€ 825,85	€ 3182,85

Featured products

UniGrip - Y-Pipe	LPB Kit	CRUFLEX