

# CASE STUDY

**Tupper Condos**  
Montréal, Québec



LABOUR SAVINGS  
**\$10,500**

TOTAL SAVINGS  
**\$9,444**

DAYS SAVED  
**18 DAYS**

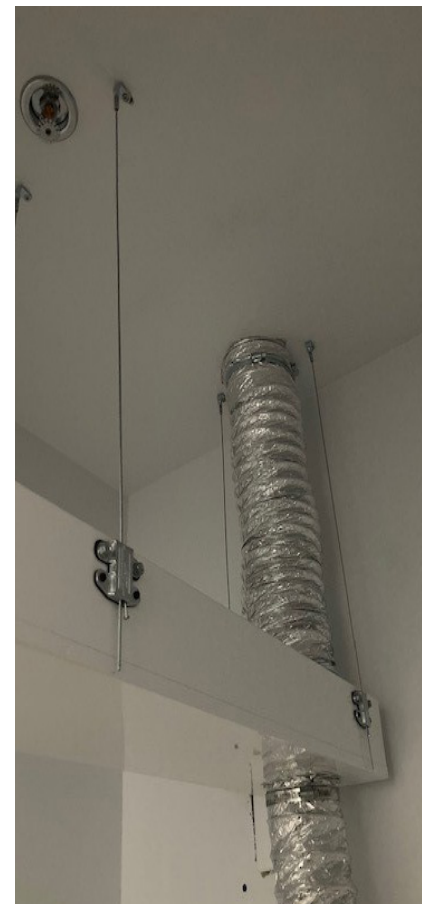
“Easy to use, no pre-assembly required and the aesthetics – Gripple helped us find a solution.”

- Dominic Patry, Superintendent. Groupe SCV

Project Summary	
<b>Building type</b>	Heavy Residential - Condos
<b>General Contractor</b>	Edyfic
<b>Engineer</b>	Blondin Fortin Associates engineers
<b>Contractor</b>	Group SCV
<b>Services</b>	HVAC

**Featured Products**

Butterfly Trapeze



## PROJECT DETAILS

Located in Square Children in downtown Montreal, Tupper Condos sit in the heart of the luxury development and as such required a quality finish all around. Gripple products were used to suspend various equipment and filtration systems throughout the 56-floor project.

A Gripple solution was chosen as **contractors could install all cables before any equipment had arrived on site** and they could later finish the installations in and around Gripple products whereas traditional chain would have been difficult to assemble around. Furthermore, **Gripple products came in kit boxes meaning transport and adjustments were made much simpler for the contractors and reduced labour times.**

Groupe SCV used Gripple Duct Trapeze hangers on the two towers due to the lack of assembly on site required, the light weight products and the versatility they added to the project.

	Gripple solution	Traditional method
Overview	<b>Duct Trapeze hanger</b>	Jack chain, L-Brackets, S-Hooks, Screws, Wall driver
Material cost	<b>\$8,856</b>	\$7,800
Installation time	<b>1 hour = 16 cables</b>	1 hour = 6 chains and 6 brackets and screws
Labour rate (per hour)	<b>\$70</b>	\$70
Total labour cost	<b>\$6,300</b>	\$16,800
Total cost	<b>\$15,156</b>	\$24,600

Based on 8 hour work day