



LABOUR SAVINGS

\$12,600

TIME SAVED

180 HOURS

“We needed flexibility to make adjustments as we progressed - [Gripplle](#) allowed for that and [could match the aesthetic we needed](#)” - Eric Canuel, Foreman, Simpkin Electrical

Project Summary

Building type	Industrial
General Contractor	JCB
Contractor	Simpkin Electrical
Services	Lighting

Featured Product

Express 2



90° Eyelet



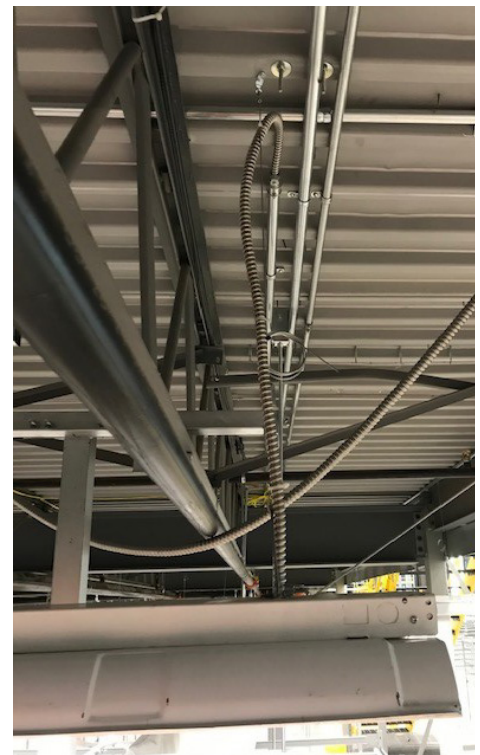
.....PROJECT DETAILS

SSENSE is a Montreal based fashion platform that serves over 150 countries on a global scale. The Canadian HQ is based in a former textiles factory and the recent project to [update and modernise](#) it with a high-quality industrial finish was a huge success.

The original plan for SSENSE was to use traditional methods of chain and J-brackets to suspend lighting however, the installation time didn't allow for them to [meet their deadline](#).

“We needed the flexibility to make adjustments as we progressed so, we had to make a change and that's [where Gripplle helped](#)”- Eric Canuel, Foreman, Simpkin Electrical

Gripplle wire ropes could be quickly installed and worked around whilst allowing for immediate adjustments. The [quick-release button on the Express 2](#) and the ease of using wire rope was a combination that [saved 9 days](#) of work on site.



CASE STUDY

SSENSE, HQ

Montreal, Canada



	Gripplle solution	Traditional method
Overview	Express 2 and 90° Eyelet	Chain, J Hooks and L-Brackets
Material cost	\$22,500	\$14,400
Installation time	120 Hours	300 Hours
Labour rate (per hour)	\$70	\$70
Total labour cost	\$8,400	\$21,000
Total cost	\$30,900	\$35,400

FINAL PROJECT PICTURES

