

# CASE STUDY

Berkeley Electric Cooperative  
Monck's Corner, South Carolina



**TIME SAVINGS**  
85 hours

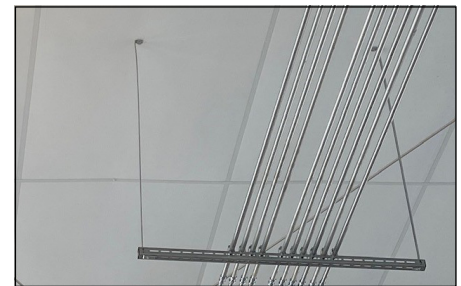
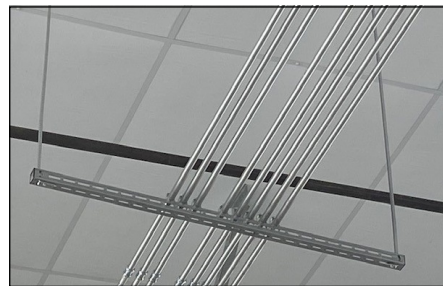
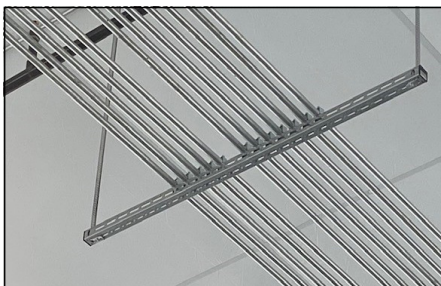
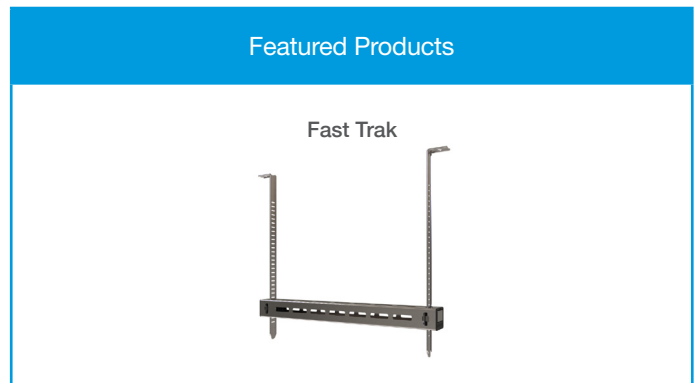
**TOTAL SAVINGS**  
\$5,871

The contractor was tasked with installing various line of conduit. The highlight of the project was the versatility and efficient use of space of that the Fast Trak system provided versus the traditional method.

### Project Summary

Building type	Commercial
Contractor	HR Allen
Building structure	Concrete
Services	Electrical

### Featured Products



## COST SAVING SUMMARY

	GripplE solution	Traditional method
Overview	Fast Trak	3/8 Threaded rod & strut
Material cost	\$2,676	\$4,722
Installation time	15 hours	100 hours
Labor rate (per hour)	\$45/hour	\$45/hour
Total labor cost	\$675	\$4,500
<b>TOTAL COST</b>	<b>\$3,351</b>	<b>\$9,222</b>



## CASE STUDY

Berkeley Electric Cooperative  
Monck's Corner, South Carolina



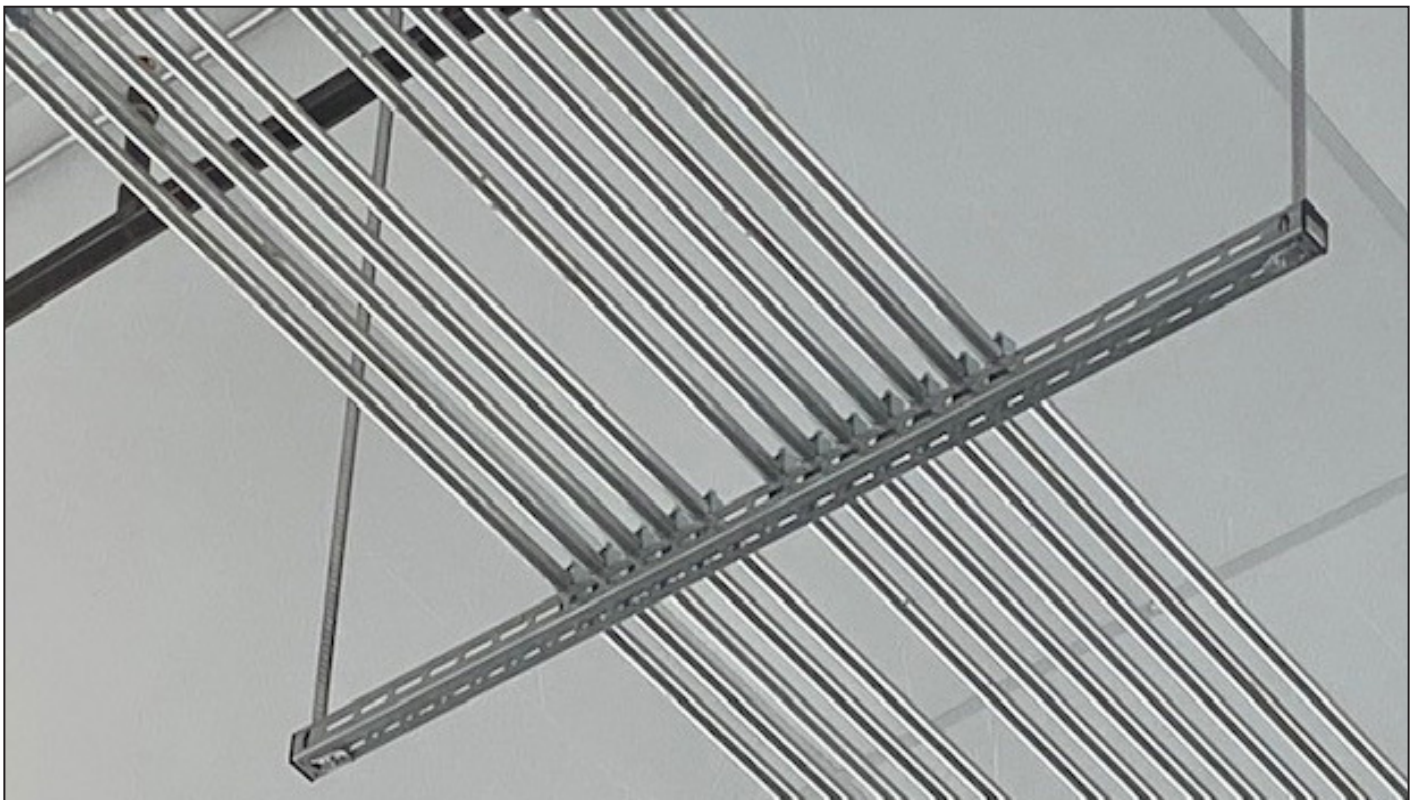
### PROJECT DETAILS

The contractor, HR Allen, was tasked with installing conduit starting from 4 lines up to 13 lines at once. The challenge of having various line quantities made the GripplE Fast Trak system the perfect solution for suspending conduit. The Fast Trak system ranges from 9 inch to 61 inch brackets lengths.

The Fast Trak system offered the speed, versatility, and efficient use of space that the contractor needed.

Prior to this job, the contractor had no experience with GripplE products. They found that not only were the products easy to install but also very advantageous when it came to labor savings.

The Fast Trak system was 6.5x faster than threaded rod and clamps, saving the contractor 85 hours in installation time.



[WWW.GRIPPLE.COM](http://WWW.GRIPPLE.COM)