

CASE STUDY

Golden Triangle
Henderson, Nevada

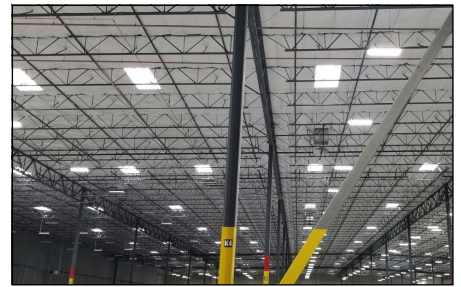
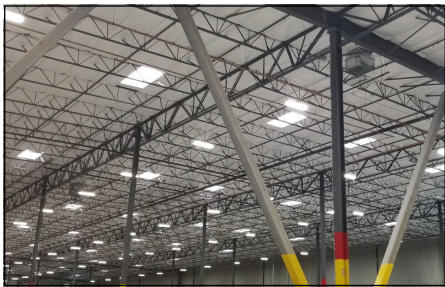
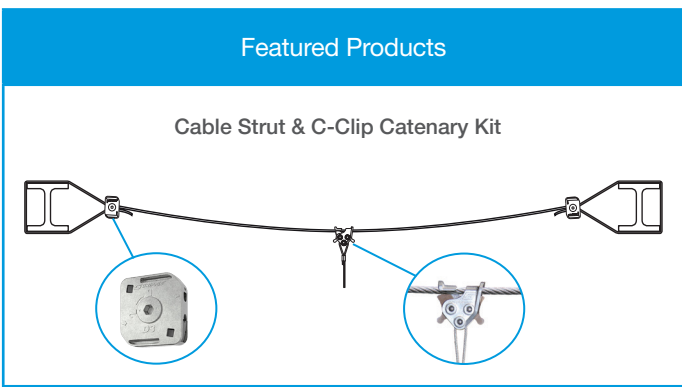


TIME SAVINGS
10 days

TOTAL SAVINGS
\$20,800

LC Electric used Gripplle Cable Strut to suspend 400 light fixtures in their warehouse.

Project Summary	
Building type	Warehouse
Contractor	LC Electric
Building structure	Bar Joist & I Beams
Services	Cable Strut



"We were able to install our Gripplle Cable Strut in 1 day as opposed to 11 days doing it with all thread and strut. That's amazing!" - Ramon Simpson, Field Superintendent.

COST SAVING SUMMARY

	Gripplle solution	Traditional method
Overview	Cable Strut & C-Clip Catenary Kit	3/8" threaded rod & strut
Material cost	\$12,000	\$16,000
Installation time	1 Day	11 days planned
Labor rate (per hour)	\$65/hour	\$65/hour
Total labor cost	\$1,300	\$11,440
TOTAL COST	\$13,300	\$27,440



CASE STUDY

Golden Triangle
Henderson, Nevada

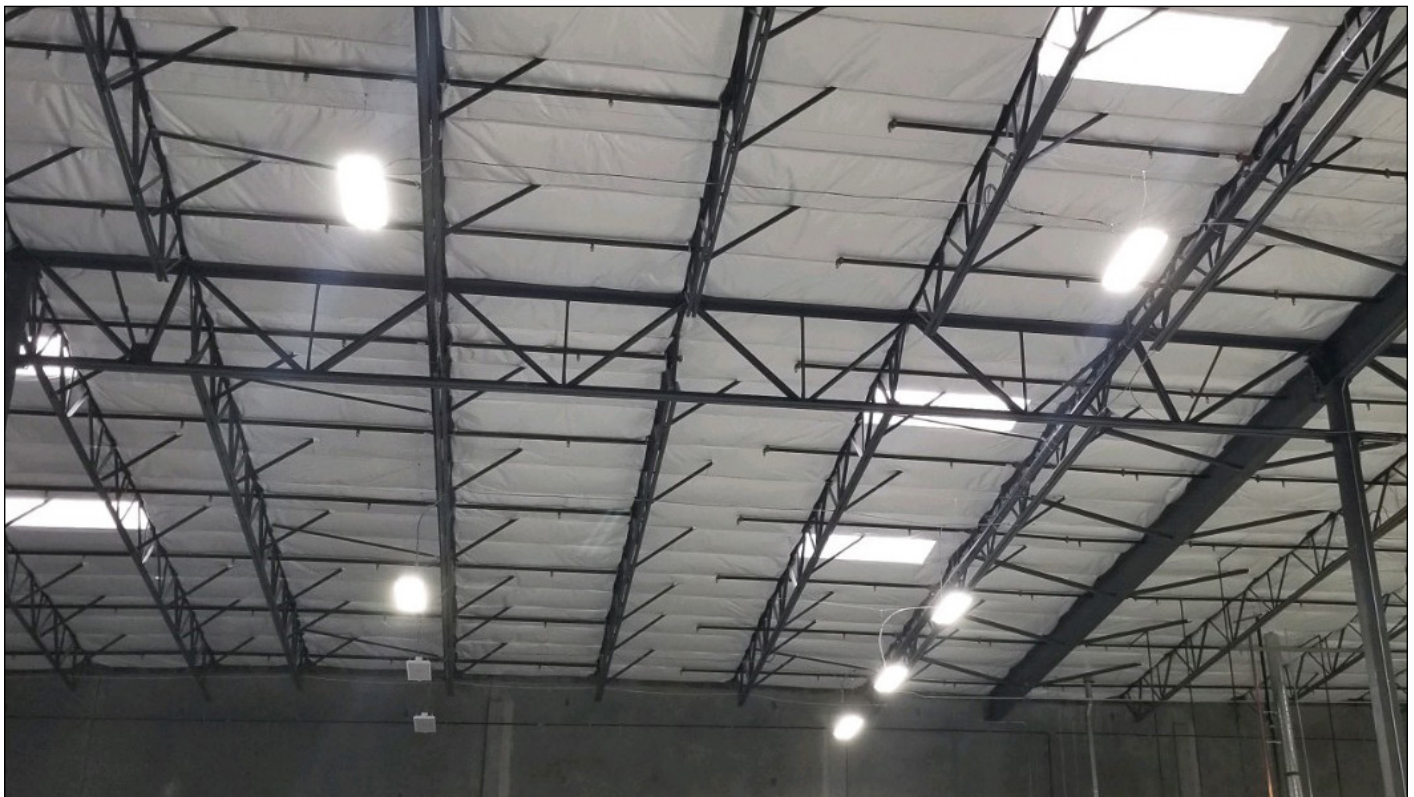


PROJECT DETAILS

For this project, LC Electric was tasked with installing a suspended lighting system in the new 652,000 square foot 'Golden Triangle' logistics center in Henderson, Nevada.

Originally the contractor was going to use channel strut to span between bar joists and threaded rod to suspend the light fixtures. They had planned 11 days to install 400 light fixtures.

When searching for a more time saving and cost effective option, GripplE was the go-to solution. With the Cable Strut kit solution they were able to complete the entire project 90% faster than the traditional method.



WWW.GRIPPLE.COM