

CASE STUDY

Office Building
Guelph, Ontario



THE PROJECT

“Eliminating the need to cut and file the strut and rod made the installation about 8-10 times faster”

- Paul Harron, Site Manager, CMS Electrical Group

Project Summary	
Building Type	Office (New build)
MEP Contractor	CMS Electrical Group
Structure	Concrete
Building Size	Two floors
Services	Conduit/ Electrical

Featured Products

Fast Trak



How It's Supplied

Fast Trak Packaging



PROJECT DETAILS

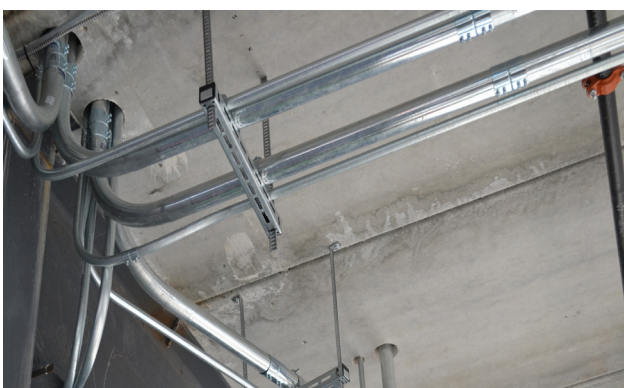
This two-story office build in Ontario had a tricky logistical issue, the solution, [change the method to a new and innovative suspension solution](#). The Fast Trak System. Paul Harron, Site Manager, CMS Electrical Group said the following.

“On this job, in particular, getting a 10' strut up to the second level would have been a pain. [We couldn't go in the elevator with it, the staircase is very narrow and it would cost a lot to hire equipment to lift the materials through the window.](#) With Fast Trak, the brackets are pre-cut in manageable lengths. It was very easy for the guys to just walk the materials up the stairs.”

“[The Fast Trak system was way faster than what we would normally do.](#) Eliminating the need to cut and file the strut and rod made the installation about 8-10 times faster.”

“From a health and safety aspect, no cutting and a limited amount of time spent at height was a huge benefit. Not only that, [we've vastly eliminated the need](#) for cutting discs, band saws [and all the components you need to do a traditional rod trapeze.](#)”

Thanks to the innovative problem solving, the job site was a safer environment all around. Great work by the whole team!



CASE STUDY

Office Building
Guelph, Ontario



ON SITE IN GUELPH

